



"That resource is currently 600% larger than the next biggest peer resource of its kind in the world.

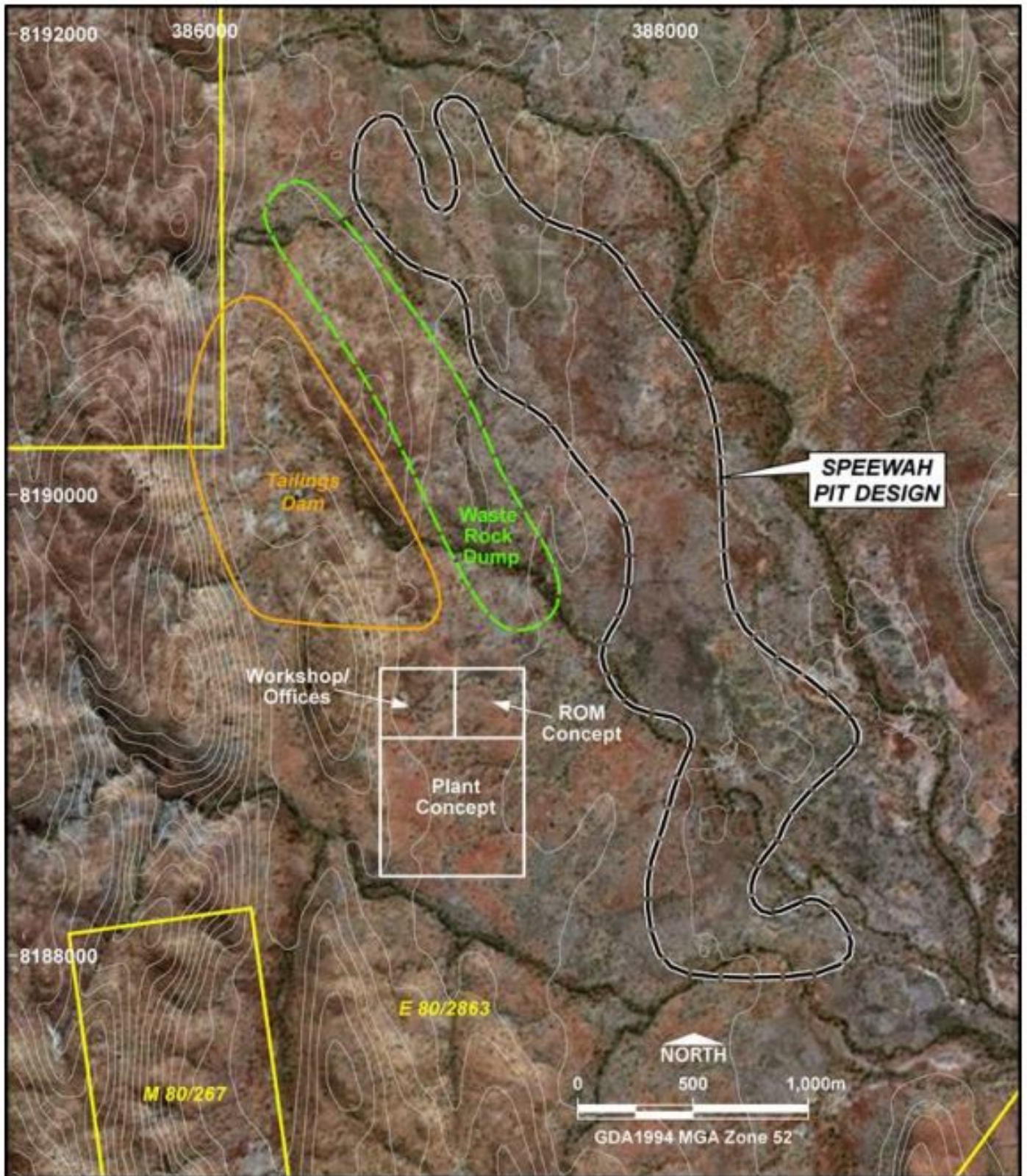
"Earlier studies have identified, but not included in those JORC measurements, that this mineralisation also hosts around 12% alumina and 4% magnesium."

**READ: King River Copper reveals improved process route for vanadium recovery at Speewah**

The preliminary pit shell is about 320 million tonnes, being 4.2 kilometres long and 1.1 kilometres wide, with an attractive low stripping ratio of 0.4.

Barton said: "That means there is one tonne of ore for each 1.4 tonnes mined.

"This mineralisation is disseminated and it is homogenous, and it's quite consistent in grade. So it could be open-cut-mined using modern large-scale iron ore types of mining methods."



*Preliminary project layout*

King River's chairman highlighted the Speewah ore body was different those held by the company's vanadium peers.



Barton said: "Its size, the flat-lying shape at surface, the grade consistency and the disseminated, and mostly unoxidised, nature of the mineralisation does make it most amenable to modern-day large-scale mining methods."

The current preliminary mining pit shell modelled is focused on only one of three deposits, or 8% of JORC resources, meaning a modular, scaleable approach could be taken to expansion and development.

Recovery work shift in thinking

King River has undertaken recovery work over the past 18 months in a bid to discover the best way to mine, process and produce a diversity of high-purity metal products.

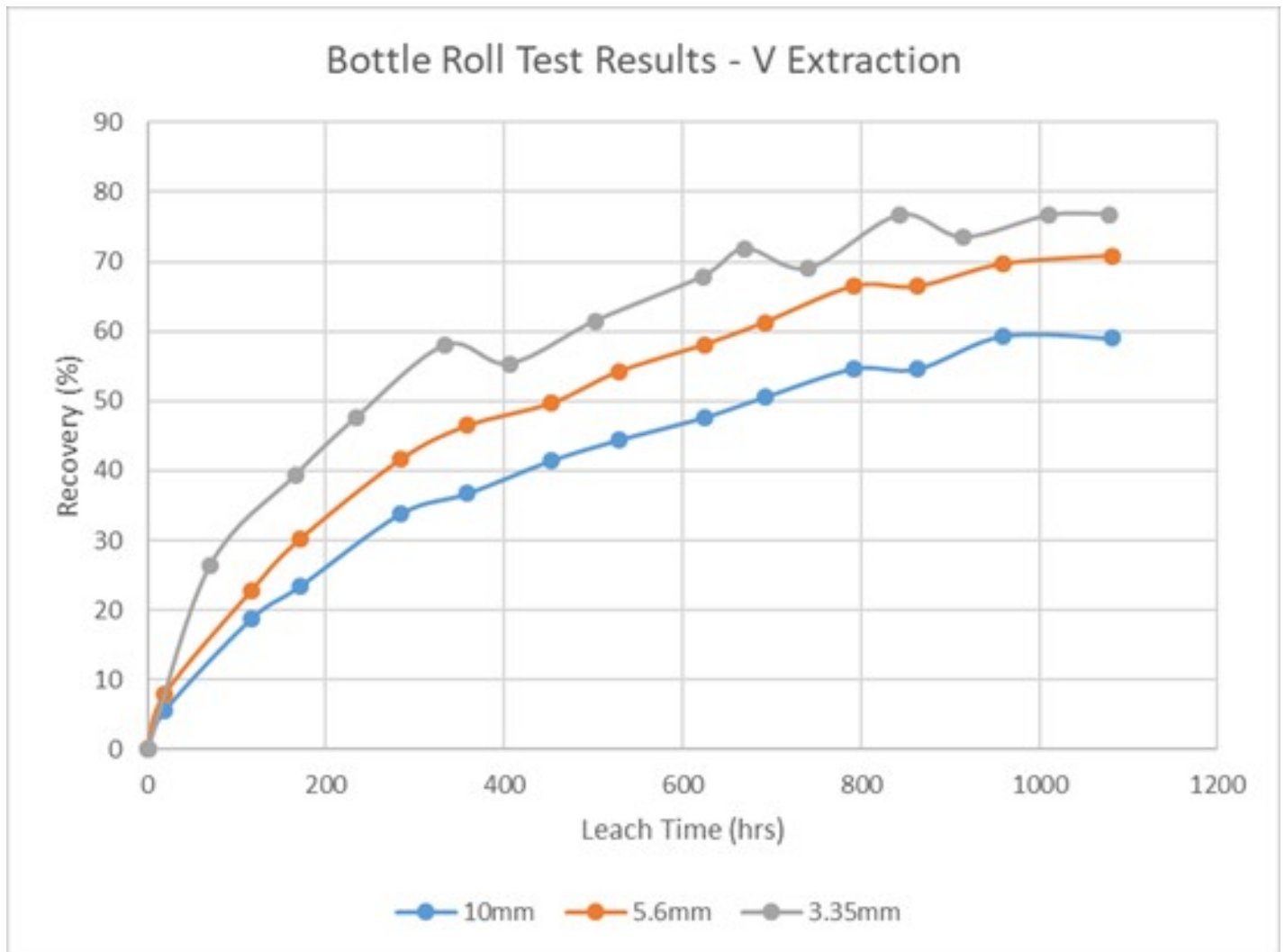
While the 2018 calendar year focus was mostly on the capital intensive large-scale hydrochloric acid-leaching process, King River is now looking at a sulphuric acid vat-leach process.

Barton said: "The results to date are most encouraging.

"Over the last four months, our testing has been investigating the dissolving behaviour of various metals under different physical conditions, including different particle sizes."

These have included 2, 3.35, 5.6 and up to 10-millimetre-sized particles.

The bottle roll sulphuric acid leaches on run-of-mine (ROM) magnetite gabbro lumps crushed to sizes of 10mm, 5.6mm and 3.35mm report 77%, 84% and 84% vanadium extractions (dissolved) respectively.



#### **READ: King River Copper scoping study results outline viable vanadium project**

The temperatures have ranged between ambient temperatures through to 70 degrees.

Acid strengths have been 10-20% when mixed in with water.

The company has also looked at concentrate batch sizes.

Those sizes have been assessed using real run-of-mine material.

King River expects to factor in its assessments to economic modelling that could produce a significantly-reduced capital expenditure and operational expenditure than the previous scoping study's plant design.

Barton said: "Our object is obviously to identify the sweetest spot of a combination of all those variables to most efficiently and economically dissolve our targeted metals.

"We will discover that by varying some of those different variables we can enhance and also selectively subdue some of the rates of dissolving of those different metals into the acid solution."

#### **READ: King River Copper nears Speewah vanadium scoping study completion, metallurgical tests ongoing**

The company hopes to narrow down its findings to put forward a specific option.

Barton said: "An excellent goal or objective for us in the next six months would be to try and identify the right variable setting that may efficiently dissolve the most valuable metals.

"Say, for example, 85% of the vanadium and 45% of the iron, titanium, alumina and magnesiums.

"By means of a vat-leaching run-of-mine material that might be sized at 5.6-millimetre or larger."

King River realises the standard sizing of the rocks is a major change to the 106 microns modelled in its hydrochloric process scoping study and would have a material effect on costings.

Barton said: "Eliminating any need to fine-crush and grind, and/or to concentrate our ores would materially reduce the capital costs of building such a large-scale project."

Over recent weeks work has started to assess the precipitation performances of the various metals coming out of the pregnant acid leach solutions.

Trials have included solvent extraction, ion exchange, thermal hydrolysis and chemical precipitation method trialling.

If King River takes the heap leach track, it expects to further save on unit costs by building and operating a sulphuric acid manufacturing plant on-site at Speewah.

This could have other benefits for cost control.

Once the heap-leach testing process finishes early this year, the company's board expects to authorise an in-depth PFS to determine key metrics for the project, including a net present value.

### **READ: King River Copper scoping study supports future fluorite mine**

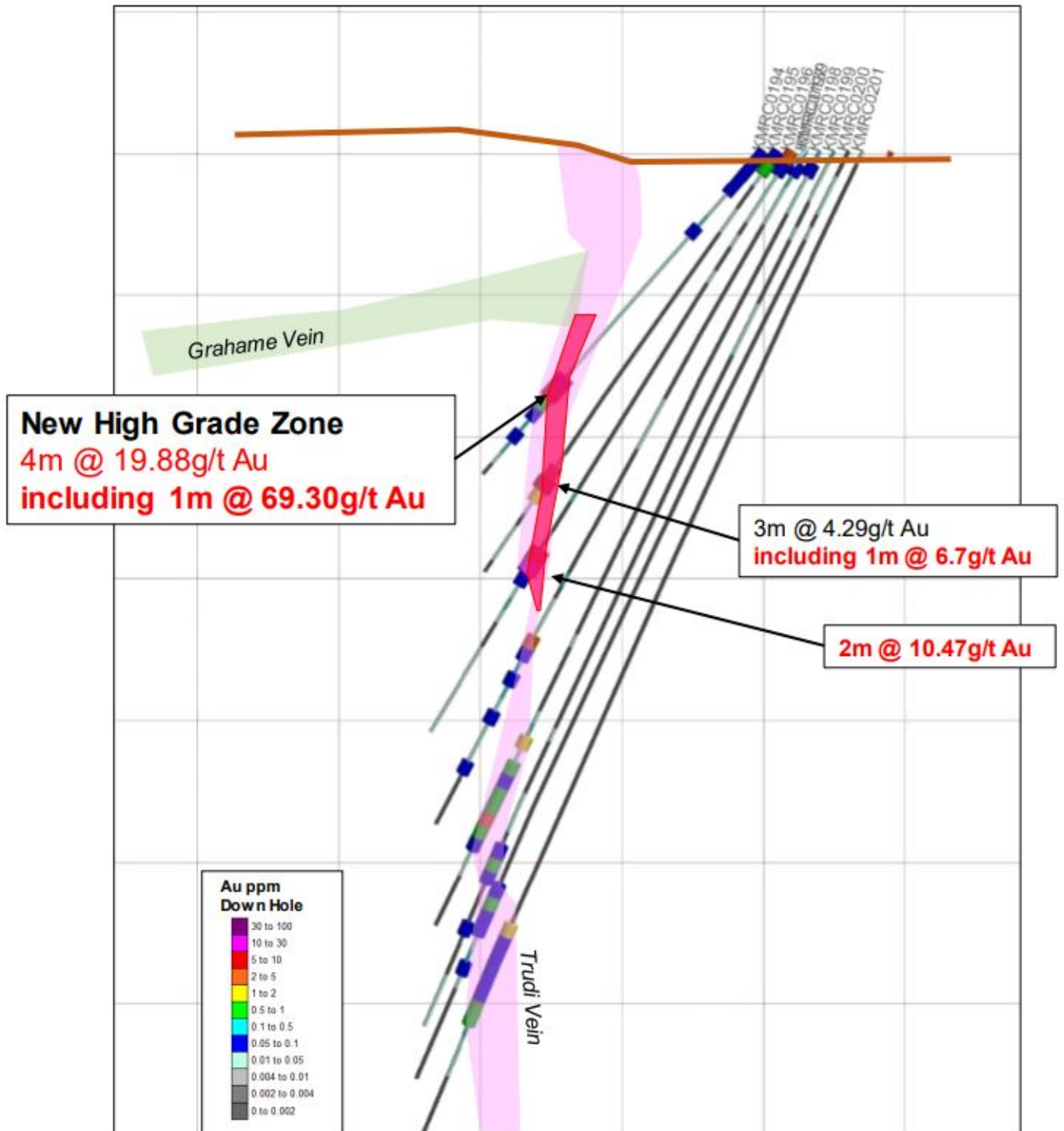
King River plans to make the appointment of a PFS project manager a top priority.

A preliminary project implementation timeline estimates full production could be achieved in July 2023.

Barton highlighted the location of Speewah project and the quality of the Tier 1 mining jurisdiction King River calls home.

He said: "The project location is also very close to a port, a mining workforce and the Asian export markets.

"Australia is considered a safe domicile to build world-class projects, and it's a safe place to reliably long-term-source metal products."



Copper-gold to a new subsidiary

King River also has the Mt Remarkable Gold Project in the East Kimberley.

Drilling has intersected a new, high-grade gold zone at the eastern edge of the Trudi Main Grid.

Results feature 4 metres grading 19.88 g/t gold including 1-metre at 69.30 g/t from 21 metres depth.

The new zone is open both up and down plunge to the east.

READ: King River Copper proposes a name change to King River Resources

Last year in November 2018 the company had a name change from King River Copper Ltd (ASX:KRC).

Speaking ahead of the proposed rebrand and name change, the company said in August 2018 it planned to place its Remarkable gold discovery into a new wholly-owned subsidiary called Kimberley Gold Pty Ltd.

The newco subsidiary would also house its parent company's other Western Australian copper/gold tenements and applications for tenements outside the Speewah Dome boundary.

King River's existing subsidiary, Speewah Mining Pty Ltd, would continue to own all its parent company's vanadium, titanium, iron and fluorspar projects.



#### Quarterly reporting

King River is putting together its quarterly reports for December quarter 2018.

On October 24, 2018, it released its September quarter 2018 reports to the market.

The September quarterly cashflow report revealed it used \$1.6 million for operating activities, \$2,000 on investing, \$2.6 million on financing and ended the period with \$5.6 million cash.

King River's total estimated cash outflows for December quarter 2018 were \$1.6 million.



## Top shareholders

Barton and his associates are collectively the largest shareholders in the company, with a stake of about 8% in October 2018.

Univerl Oil Aust PL was the next largest holder after Barton and associates on September 20, 2018, with a 2.79% stake.

HSBC Custody Nom Aust Ltd had 2.39%, BNP Paribas Nom PL HUB24 held 1.81% and Citicorp Nom PL had 1.44%.

The company's top 20 shareholders had 25.43% of the company, with 1,238,638,553 shares on issue.

King River's quarterly activities and cashflow reports are expected by the end of next week.

— with **Danielle Doporto, Tharun George**

Proactive Investors facilitate the largest global investor network across 4 continents in 4 languages. With a team of analysts journalists & professional investors Proactive produce independent coverage on 1000's of companies across every sector for private investors, private client brokers, fund managers and international investor communities.

Contact us +44 (0)207 989 0813 [action@proactiveinvestors.com](mailto:action@proactiveinvestors.com)

## No investment advice

The Company is a publisher. You understand and agree that no content published on the Site constitutes a recommendation that any particular security, portfolio of securities, transaction, or investment strategy is suitable or advisable for any specific person. You understand that the Content on the Site is provided for information purposes only, and none of the information contained on the Site constitutes an offer, solicitation or recommendation to buy or sell a security. You understand that the Company receives either monetary or securities compensation for our services. We stand to benefit from any volume which any Content on the Site may generate.

You further understand that none of the information providers or their affiliates will advise you personally concerning the nature, potential, advisability, value, suitability or profitability of any particular security, portfolio of securities, transaction, investment, investment strategy, or other matter.

You understand that the Site may contain opinions from time to time with regard to securities mentioned in other products, including Company-related products, and that those opinions may be different from those obtained by using another product related to the Company. You understand and agree that contributors may write about securities in which they or their firms have a position, and that they may trade such securities for their own account. In cases where the position is held at the time of publication and such position is known to the Company, appropriate disclosure is made. However, you understand and agree that at the time of any transaction that you make, one or more contributors may have a position in the securities written about. You understand that price and other data is supplied by sources believed to be reliable, that the calculations herein are made using such data, and that neither such data nor such calculations are guaranteed by these sources, the Company, the information providers or any other person or entity, and may not be complete or accurate.

From time to time, reference may be made in our marketing materials to prior articles and opinions we have published. These references may be selective, may reference only a portion of an article or recommendation, and are likely not to be current. As markets change continuously, previously published information and data may not be current and should not be relied upon.

The Site does not, and is not intended to, provide investment, tax, accounting, legal or insurance advice, and is not and should not be construed as providing any of the foregoing. You should consult an attorney or other relevant professional regarding your specific legal, tax, investment or other needs as tailored to your specific situation.

In exchange for publishing services rendered by the Company on behalf of King River Resources Ltd named herein, including the promotion by the Company of King River Resources Ltd in any Content on the Site, the Company receives from said issuer annual aggregate cash compensation in the amount up to  
Twenty Five Thousand dollars (\$25,000).