



**ZINC EXPLORER
LISTED ON AIM**

JUNE 2008

IMPORTANT NOTICE

- This presentation does not constitute or form part of any offer for sale or solicitation of any offer to buy or subscribe for any securities in Connemara Mining Co plc nor shall it or any part of it form the basis of, or be relied on in connection with, or act as any inducement to enter into, any contract or commitment whatsoever. No reliance may be placed for any purpose whatsoever on the information or opinions contained in this presentation or on any other document or oral statement or on the completeness, accuracy or fairness of any such information and/or opinions. No undertaking, representation, warranty or other assurance, express or implied, is made or given by or on behalf of Connemara Mining Co plc or any of their respective directors, employees or advisers, as to the accuracy or completeness of the information or opinions contained in this presentation, and (save in the case of fraud) no responsibility or liability is accepted by any of them for any such information or opinions or for any errors, omissions, misstatements, negligence or otherwise contained or referred to in this presentation. The contents of this presentation have not been approved by an authorised person within the meaning of the Financial Services and Markets Act 2000.
- This presentation does not constitute an offer to the public as referred to in section 85 of the Financial Services and Markets Act 2000 (as amended) of the United Kingdom and accordingly has not been nor will it be approved by any competent authority in the United Kingdom. This presentation is not a prospectus within the meaning of the Prospectus (Directive 2003/71/EC) Regulations 2005 of Ireland and therefore has not been approved by the Irish Financial Services Regulatory Authorities being the competent authority for the purposes of Directive 2003/71/EC in Ireland. This presentation is not an offering document for the purposes of section 49 of the Investment Funds, Companies and Miscellaneous Provisions Act 2005 of Ireland.
- This Presentation has been prepared by the Directors of Connemara Mining Co plc and is being issued solely to and directed at persons who have professional experience in matters relating to investments falling within Article 19(1)(a) of the Financial Services and Markets Act 2000 (Financial Promotion) Order 2001 ("FPO") or (b) high net worth entities and other persons to whom the presentation may otherwise lawfully be communicated, falling within Article 49(1)(a) of the FPO (all such persons together being referred to as "Relevant Persons"). In consideration of the receipt of the presentation each recipient warrants and represents that he or it is a person falling within that description. Delivery of this information to any other person or reproduction, in whole or in part, without the prior consent of Connemara Mining Co plc is prohibited.
- This information is being supplied to you, in whole or in part, for information purposes only and not for any other purpose. In particular, the distribution of this document in jurisdictions other than United Kingdom or Ireland may be restricted by law and persons into whose domain this document comes should inform themselves about, and observe, any such restrictions. Any failure to comply with these restrictions may constitute a violation of laws of any such other jurisdictions.



CURRENT POSITION

- Connemara is a zinc/lead focused explorer concentrating on Ireland where the company holds extensive ground
- A world class zinc discovery has been made at Stonepark in Limerick. It is being drilled by Teck Cominco, our JV partner
- Drilling on the Lough Sheelin block near the Tara mine discovered zinc mineralisation in 9 of 11 holes
- The company is managed and directed by a team with extensive base metal experience



CORPORATE

- Listed on AIM July 2007. Market Cap £5.0m. 15.2m shares in issue, diluted 16.3m, current price 32p
- Holds 38 exploration concessions in Ireland focused on zinc (Appendix 1). Further applications have been made
- Joint venture with Teck Cominco of Canada on 16 of the licences in Limerick whereby Teck spend \$3mC to acquire a 75% interest
- Directors, family and associates control 40%
- NOMAD/Broker: Blue Oar Securities
- Current Cash: £600k



WHY ZINC?

- Good fundamentals
- Demand growing due to influence of China and India
- Zinc is used for cars, housing, appliances and electronics
- Main uses are galvanizing, die-casting and brass
- Supply is at best stable
- Very little exploration in the last 30 years and mines are running out
- The price is strong, at USD2000 a tonne



WHY IRELAND?

Ireland has many advantages;

- It is very prospective for zinc
- Three of the largest zinc mines in the world are in Ireland
- It has clear commercial rules
- Low tax rates: 25%
- No State participation
- It has a cluster of established mining supply services e.g. drilling companies, labs, geologists etc.
- Excellent infrastructure



ZINC IN IRELAND

- In 2007, Ireland produced 38% of Western Europe's zinc and 25% of its lead
- The Boliden/Tara mine at **Navan** is the largest zinc mine in Europe and 6th largest in the world
- The Anglo American mine at **Lisheen** is in the top 12 worldwide producing in 2006 1.53Mt ore grading 12.30% Zinc and 2.10% Lead
- The Lundin mine at **Galmoy** is the 5th largest zinc mine in Europe
- Twenty six companies are currently prospecting in Ireland and there has been a significant growth in the number of outstanding exploration licences



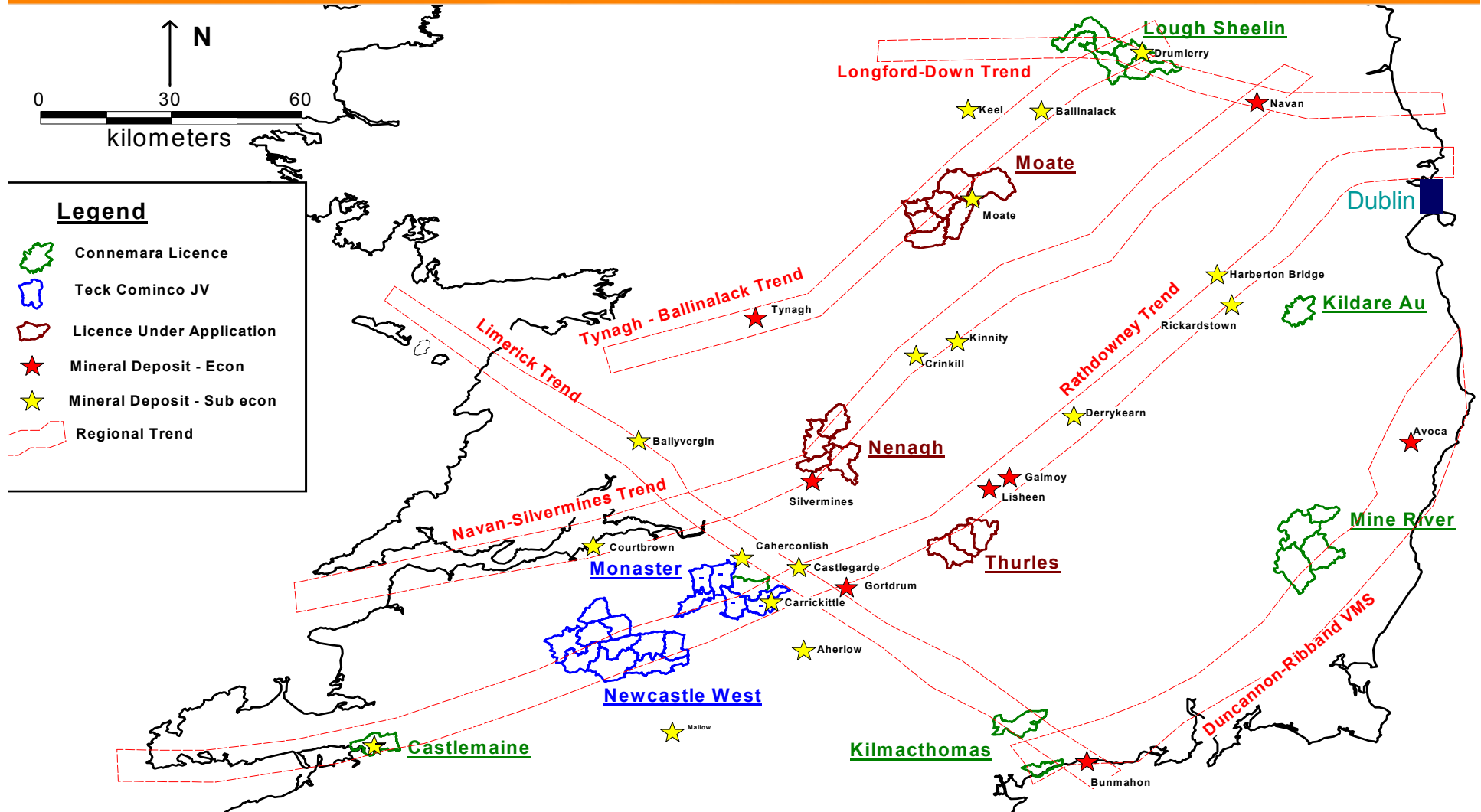
CONNEMARA LICENCE POSITION

The current Connemara licence blocks are as follows:

- **Monaster Block** – six contiguous licences in Limerick, the site of the 2007 discovery and adjacent to the Xstrata/Minco discovery
- **Newcastle West Block**– ten contiguous licences in Limerick, close to Monaster
- **Lough Sheelin Block** – five contiguous licences located in counties Cavan and Meath, with strong drilling results from first phase drilling
- **Castlemaine** – a single licence located in County Kerry
- **Thurles Block** – three contiguous licences in County Tipperary, 5km south of Lisheen mine
- **Nenagh Block** - four contiguous licences in County Tipperary, 1.2km north of Silvermines mine
- **Moate Block** - four non contiguous licences in County Westmeath
- **Mine River Block** – four contiguous licences in Counties Waterford and Wicklow
- **Kildare Block**– a single licence in County Kildare, with strong gold indications.
- Additional ground has been offered and will be accepted



EXHIBIT 1: CONNEMARA IRISH LICENCES



ZINC DISCOVERY AT STONEPARK, LIMERICK

- A significant zinc discovery has been made at Stonepark in Limerick
- The project is a joint venture with Teck Cominco who are operator and are spending \$3mC to earn a 75% interest.
- The fourth hole of a five hole Phase 1 programme intersected significant zinc lead mineralisation consisting of massive to disseminated sphalerite, galena and pyrite and is hosted in a thick >35 metre of brecciated Waulsortian limestone
- A follow up step out hole in Phase 2 encountered significant thickness of commercial grade zinc.
- Table 1 gives results
- The discovery is in a 12km corridor with the Xstrata/Minco Tobermalug and Caherconlish discoveries, 1km to the Northeast



TABLE 1: ASSAY RESULTS, STONEPARK, LIMERICK

Hole ID	Hole Angle (degrees)	From (m)	To (m)	Thickness (m)	Estimated True Thickness (m)	Zn (%)	Pb (%)
TC-2638-4	-90	372.75	374.05	1.30	1.30	6.85	0.3
TC-2638-4	-90	374.05	376.1	2.05	2.05	0.3	<0.05
TC-2638-4	-90	376.1	380.1	4.00	4.00	11.62	3.46
		<i>including:</i>					
TC-2638-4	-90	378.95	380.1	1.15		28.61	4.17
TC-2638-7	-76	394.85	410.2	15.35	14.9	3.25	0.33
		<i>including:</i>					
TC-2638-7	-76	394.85	397.7	2.85	2.8	12.18	0.75



EXHIBIT 2:

LOCATION OF CONNEMARA LICENCES IN LIMERICK

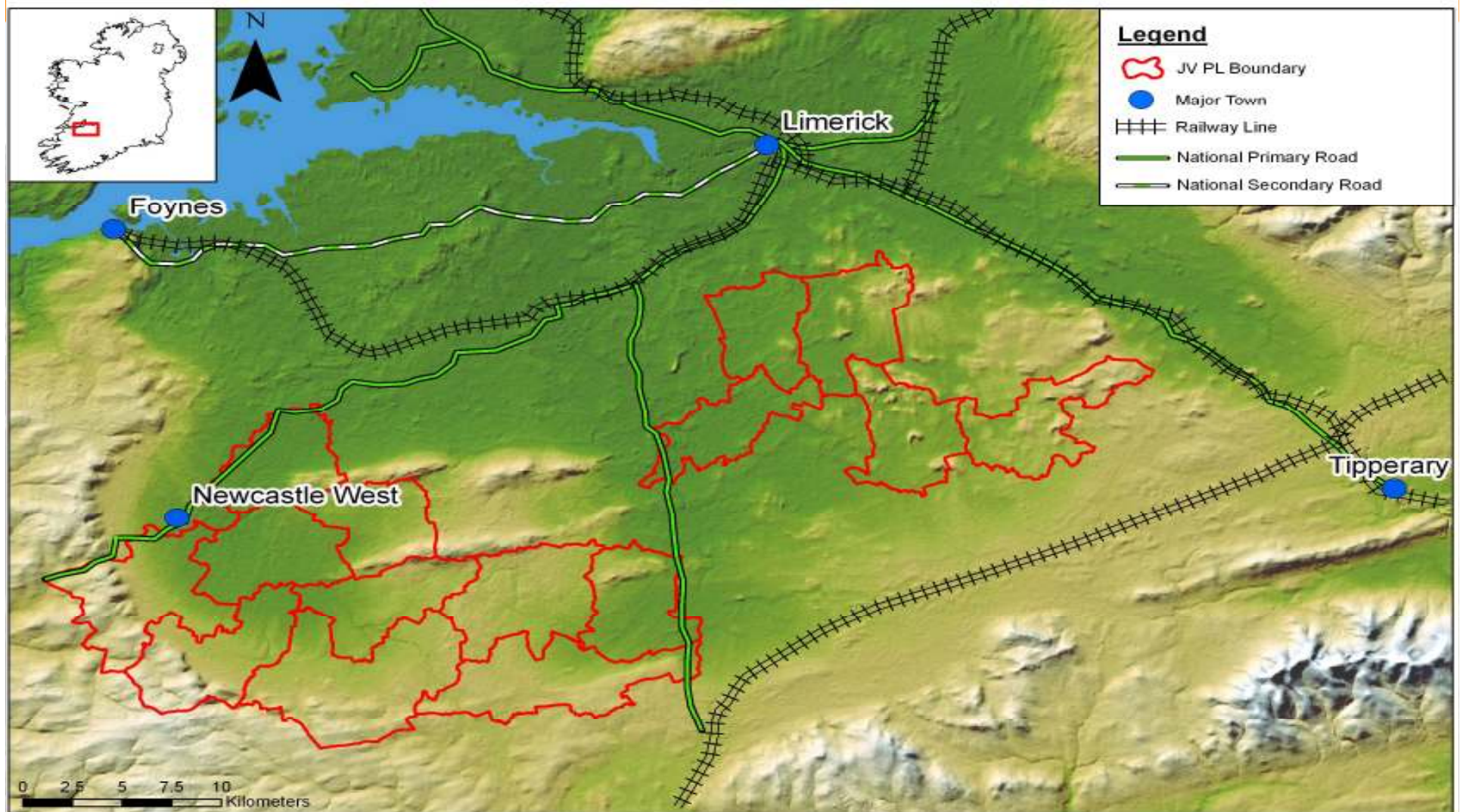


EXHIBIT 3: LOCATION OF CONNEMARA DRILL HOLES IN LIMERICK

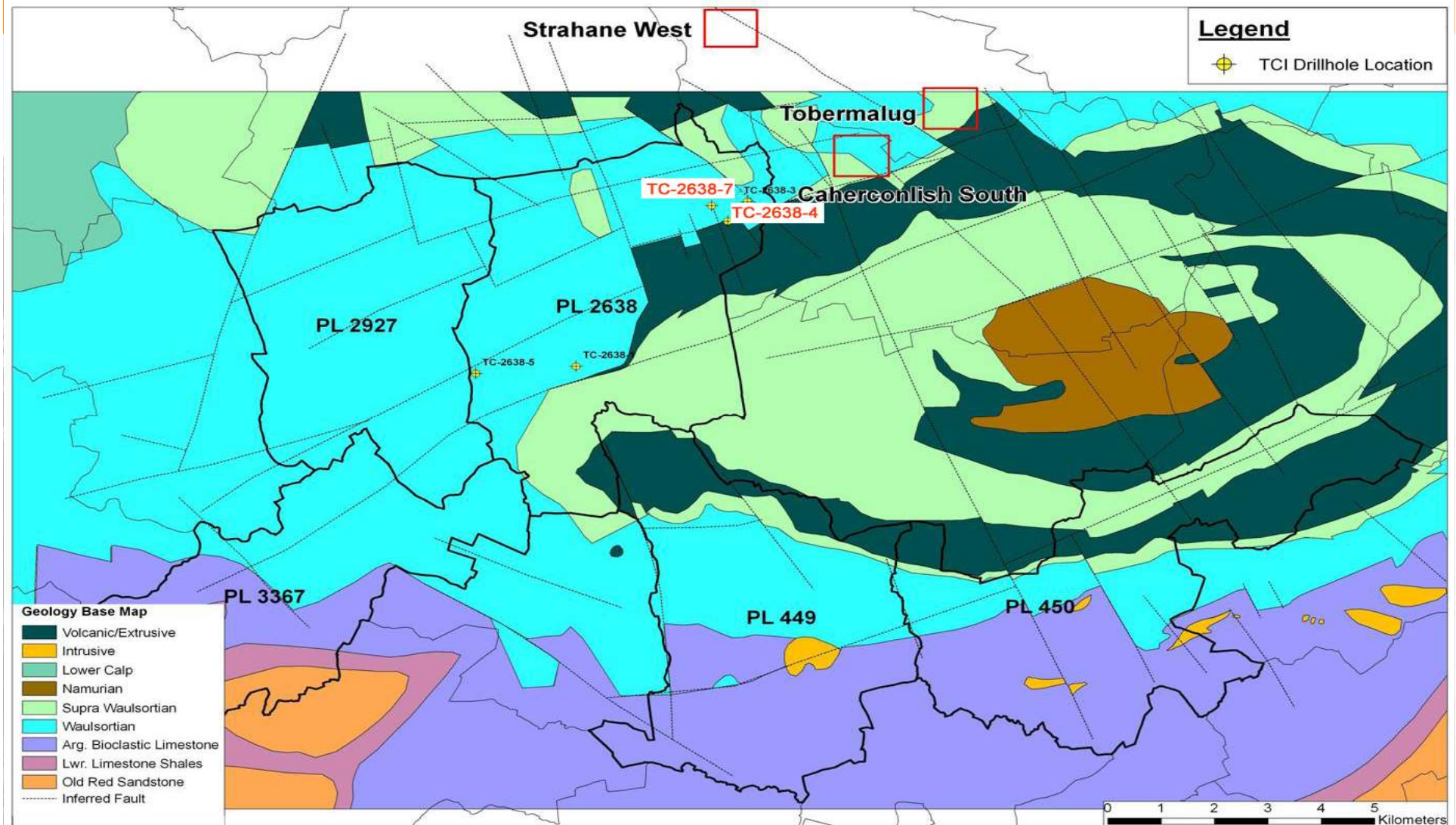
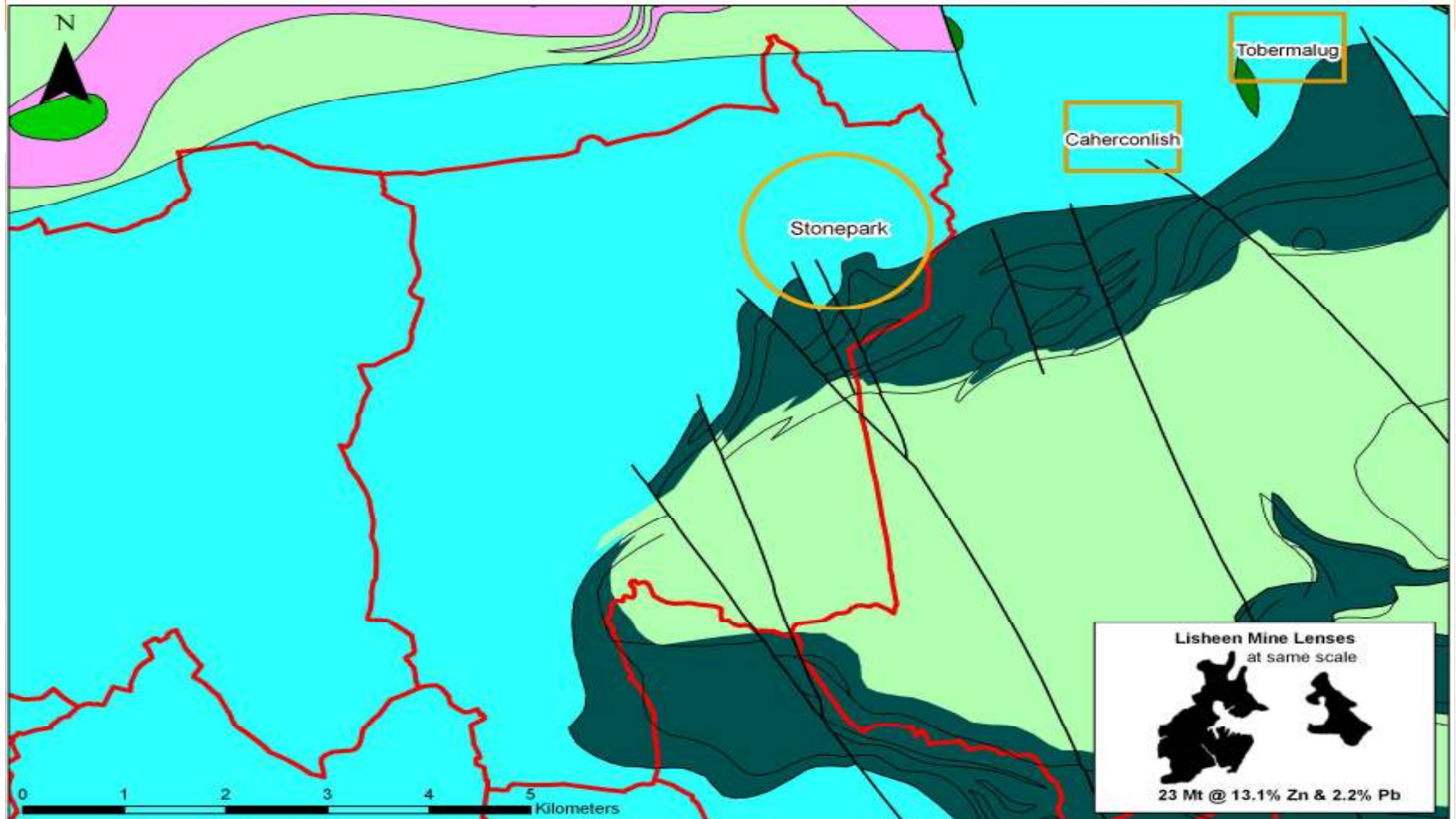


EXHIBIT 4: COMPARISON WITH OTHER IRISH DISCOVERIES



LOUGH SHEELIN DISCOVERY

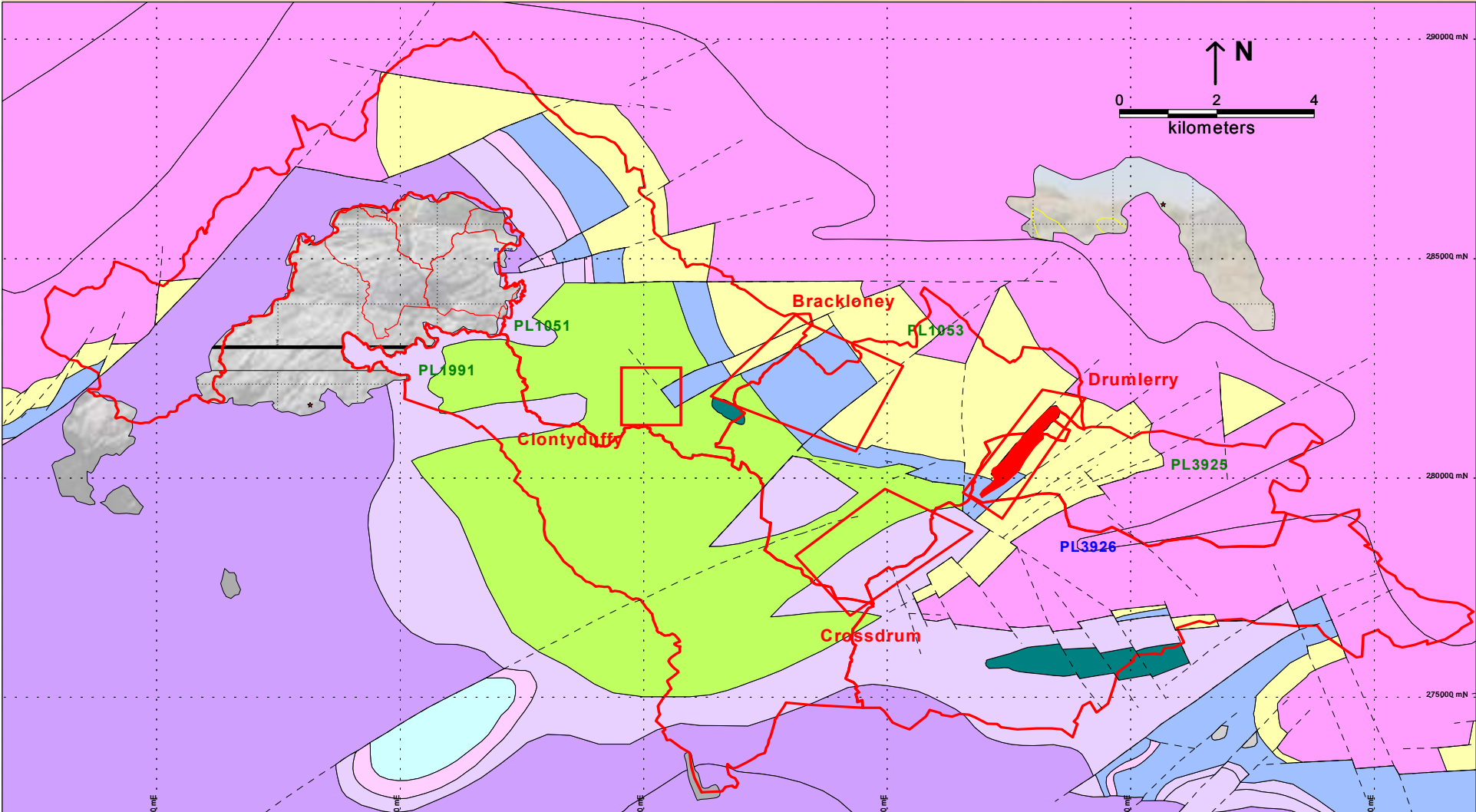
- The Lough Sheelin Block is located 20km west of the Boliden/Tara mine at Navan and consists of 5 licences (Exhibit 5)
- A drilling programme commenced in December 2007. The five hole programme was extended to 11 holes because of good results (Table 2)
- The work focused on the Drumlerry area where earlier drilling discovered mineralisation
- A follow up programme is planned for H2 2008



TABLE 2: DRILLING AND ASSAY RESULTS FROM LOUGH SHEELIN

Hole ID	Start Date	Finish Date	East	North	Final Depth	Result	From (m)	To (m)	Thick (m)	Zinc%	Lead%
C-1053-001	12-Dec-07	19-Dec-07	258,572	280,895	120.0	Trace diss pyr & sph	NS				
C-3925-001	20-Dec-07	10-Jan-08	258,090	280,895	109.0	Diss sph & gal	58.7	59.15	0.45	4.35	2.32
C-3925-002	11-Jan-08	15-Jan-08	258,400	280,420	30.3	Missed target	NS				
C-3925-003	16-Jan-08	23-Jan-08	256,954	279,669	181.0	Trace sph & gal in IMSU	NS				
C-3925-004	24-Jan-08	5-Feb-08	257,196	279,873	220.0	Trace diss pyr & sph in TM				Trace	Trace
C-3925-005	6-Feb-08	14-Feb-08	257,363	280,284	145.0	Vein/FF sph & gal in TM	114.1	118.8	4.70	3.38	0.59
C-3925-006	15-Feb-08	20-Feb-08	257,729	280,754	94.0	Minor diss & FF sph & gal	42.65	44.95	2.3	0.88	0.12
C-3925-007	3-Mar-08	6-Mar-08	257,385	280,531	112.0	Minor diss & FF sph & gal	84.1	85.55	1.45	0.71	0.22
C-3925-008	7-Mar-08	13-Mar-08	257,236	280,458	130.0	1m vis est 3% Zn FF	104.1	105.7	1.60	1.21	0.35
C-3925-009	14-Mar-08	20-Mar-08	257,115	280,953	129.2	3m of diss & FF sph & gal	106.6	107.8	1.20	2.36	0.58
C-1053-002	25-Mar-08	1-Apr-08	257,076	280,721	121.0	Trace diss sph & gal	103.7	104.4	0.7	1.20	0.26

EXHIBIT 5: LOUGH SHEELIN BLOCK



EXPLORATION BLOCKS

- Connemara holds good ground generally in, or close to, areas of current or former zinc/lead mining
- The Thurles block is 5km from the Anglo American Lisheen mine and has previous drilling results
- The Nenagh block is 1.2km from the former Silvermines zinc mine. Historical work on the block shows good base metal indications
- The Moate block straddles the Tynagh-Ballinalack trend. Previous drilling on Moate discovered extensive mineralisation
- The Mine River block hosts the old Caim mine. The area is prospective for base metal and gold mineralisation
- A single gold licence is held in the Kildare area



DIRECTORS / MANAGEMENT

- **John Teeling : Executive Chairman**

38 years experience in Irish zinc including Tynagh, Tara and Galmoy. Established Connemara in 2004. Is chairman of a number of AIM resource companies

- **Jim Finn : Executive Director**

20 years resource company experience including 12 years as Finance Director of Minco. Holds qualifications in finance and accounting. Is a director of a number of resource and industrial ventures. Has led the listing procedure for 7 AIM companies

- **Vivian Byrne : Non-Executive Director**

Chairman of CSA consulting, 40 years experience of the international minerals industry, former senior executive European exploration RTZ. Consultant to European and World Bank programmes in Africa, Caribbean and the Pacific



FUTURE

- Ongoing drilling of Stonepark discovery. Two rigs drilling
- Follow up drilling on Lough Sheelin
- Geophysical and geochemical prospecting on Moate, Thurles and Nenagh blocks
- Continue to build a landbank



APPENDIX 1:

GROUND HOLDINGS IN IRELAND

Block	PL Number	Status	Commodity	Target Type	Host Lithology
Lough Sheelin	1051	Sole Venture	Zn, Pb & Ag	Irish Type	Navan Beds
Lough Sheelin	1053	Sole Venture	Zn, Pb & Ag	Irish Type	Navan Beds
Lough Sheelin	1784	Sole Venture	Zn, Pb & Ag	Irish Type	Navan Beds
Lough Sheelin	1991	Sole Venture	Zn, Pb & Ag	Irish Type	Navan Beds
Lough Sheelin	3721	Sole Venture	Zn, Pb & Ag	Irish Type	Navan Beds
Monaster	449	Teck Cominco JV	Zn, Pb & Ag	Irish Type	Waulsortian Reef
Monaster	450	Teck Cominco JV	Zn, Pb & Ag	Irish Type	Waulsortian Reef
Monaster	2638	Teck Cominco JV	Zn, Pb & Ag	Irish Type	Waulsortian Reef
Monaster	2927	Teck Cominco JV	Zn, Pb & Ag	Irish Type	Waulsortian Reef
Monaster	3367	Teck Cominco JV	Zn, Pb & Ag	Irish Type	Waulsortian Reef
Monaster	2531	Teck Cominco JV	Zn, Pb & Ag	Irish Type	Waulsortian Reef
Castlemaine	2029	Sole Venture	Zn, Pb & Ag	Irish Type	Waulsortian Reef
Newcastle West	1303	Teck Cominco JV	Zn, Pb & Ag	Irish Type	Waulsortian Reef
Newcastle West	1940	Teck Cominco JV	Zn, Pb & Ag	Irish Type	Waulsortian Reef
Newcastle West	1942	Teck Cominco JV	Zn, Pb & Ag	Irish Type	Waulsortian Reef
Newcastle West	1943	Teck Cominco JV	Zn, Pb & Ag	Irish Type	Waulsortian Reef
Newcastle West	1946	Teck Cominco JV	Zn, Pb & Ag	Irish Type	Waulsortian Reef
Newcastle West	1947	Teck Cominco JV	Zn, Pb & Ag	Irish Type	Waulsortian Reef
Newcastle West	2594	Teck Cominco JV	Zn, Pb & Ag	Irish Type	Waulsortian Reef
Newcastle West	2845	Teck Cominco JV	Zn, Pb & Ag	Irish Type	Waulsortian Reef
Newcastle West	3650	Teck Cominco JV	Zn, Pb & Ag	Irish Type	Waulsortian Reef
Newcastle West	3651	Teck Cominco JV	Zn, Pb & Ag	Irish Type	Waulsortian Reef
Tipperkevin	3777	Sole Venture	Au	Shear hosted Au	Sil / Ord Clastics

APPENDIX 1:

GROUND HOLDINGS IN IRELAND (CONTD)

Mine River	2553	Sole Venture	Zn, Pb, Cu & Ag / Au	VMS, Shear hosted Au	Duncannon Gr
Mine River	2554	Sole Venture	Zn, Pb, Cu & Ag / Au	VMS, Shear hosted Au	Duncannon Gr
Mine River	2555	Sole Venture	Zn, Pb, Cu & Ag / Au	VMS, Shear hosted Au	Duncannon Gr
Mine River	2558	Sole Venture	Zn, Pb, Cu & Ag / Au	VMS, Shear hosted Au	Duncannon Gr
Waterford	3201	Sole Venture	Zn, Pb, Cu & Ag / Au	VMS, Shear hosted Au	Duncannon Gr
Waterford	3519	Sole Venture	Zn, Pb, Cu & Ag / Au	VMS, Shear hosted Au	Duncannon Gr
Thurles	1577	Offered	Zn, Pb & Ag	Irish Type	Waulsortian Reef
Thurles	1578	Offered	Zn, Pb & Ag	Irish Type	Waulsortian Reef
Thurles	3321	Offered	Zn, Pb & Ag	Irish Type	Waulsortian Reef
Nenagh	3425	Offered	Zn, Pb & Ag	Irish Type	Waulsortian Reef
Nenagh	3953	Offered	Zn, Pb & Ag	Irish Type	Waulsortian Reef
Nenagh	3678	Offered	Zn, Pb & Ag	Irish Type	Waulsortian Reef
Nenagh	3156	Offered	Zn, Pb & Ag	Irish Type	Waulsortian Reef
Moate	3982	Offered	Zn, Pb & Ag	Irish Type	Waulsortian Reef / Navan Beds
Moate	3983	Offered	Zn, Pb & Ag	Irish Type	Waulsortian Reef / Navan Beds
Moate	3406	Offered	Zn, Pb & Ag	Irish Type	Waulsortian Reef / Navan Beds



CONTACT DETAILS

WWW.CONNEMARAMINING.COM

INFO@CONNEMARAMINING.COM

T: +353 1 833 2833

