



**SSV-TSX.V**



**SouthernSilver**  
EXPLORATION CORPORATION

*April 2010*



# Forward-looking Statements

Some of the statements contained in this presentation may be deemed “forward-looking statements.” These include estimates and statements that describe the Company’s future plans, objectives or goals, and expectations of a stated condition or occurrence.

Forward-looking statements may be identified by the use of words such as “believes”, “anticipates”, “expects”, “estimates”, “may”, “could”, “would”, “will”, or “plan”. Since forward-looking statements are based on assumptions and address future events and conditions, by their very nature they involve inherent risks and uncertainties.

Actual results relating to, among other things, results of exploration, reclamation, capital costs, and the Company’s financial condition and prospects, could differ materially from those currently anticipated in such statements for many reasons such as but not limited to; changes in general economic conditions and conditions in the financial markets; changes in demand and prices for the minerals the Company expects to produce; litigation, legislative, environmental and other judicial, regulatory, political and competitive developments; technological and operational difficulties encountered in connection with the Company’s activities; and changing foreign exchange rates and other matters discussed in this presentation.

Persons should not place undue reliance on the Company’s forward-looking statements. Further information regarding these and other factors, which may cause results to differ materially from those projected in forward-looking statements, are included in the filings by the Company with securities regulatory authorities. The Company does not assume any obligation to update or revise any forward looking statement that may be made from time to time by the Company or on its behalf, except in accordance with applicable securities laws, whether as a result of new information, future events or otherwise.

The TSX Venture Exchange has not reviewed and does not accept responsibility for the adequacy or accuracy of the contents of this presentation, that has been prepared by management.

*April 2010*



# Mexico and Southern USA

- Southern Silver is an active explorer in North America with projects in:
  - USA: Arizona and New Mexico
  - Mexico: Sinaloa, Jalisco and Chihuahua



April 2010

# Overview

- **San Juan, Sinaloa State**

- New acquisition – January 2010
- Historical data: strongly anomalous gold mineralization
- Proposed 1,200m drill program

- **Minas de Ameca, Jalisco State**

- High-grade copper-gold-silver project
- Exploration targets advanced within 8km long mineralized trend
- Third Phase Drilling in Q3 - 2010

- **Dragoon, Arizona**

- Copper - molybdenum prospect
- Newly optioned to Freeport McMoRan; US\$3 million earn-in option

- **Oro, New Mexico**

- 1,150 ha gold-silver-copper-lead-zinc project
- 2010 drill program completed

*April 2010*

# San Juan Project - Sinaloa

- 8 mining concessions – 1850 ha within the Sierra Madre Mineral Belt
- 30 km from US Gold's Magistral Project
- Excellent infrastructure: 3.5 km from paved highway, 80 km from nearest city
- Historic small-scale mining
- Reported +14g/t Au over 1-6 metre intervals
- US Gold held previous option – 27 Rotary holes (<50m) strong and consistent results over 1 km strike length



April 2010

# San Juan Project - Sinaloa



Hole #	Collar Data			From m	To m	Interval m	Au g/t
	AZ Deg	DIP Deg	Depth (m)				
HEBH08-011	0	-90	36.0	0.0	30.0	30.0	4.6
inc.				3.0	9.0	6.0	17.6
inc.				3.0	6.0	3.0	27.2
HEBH08-018	0	-90	36.0	3.0	33.0	30.0	1.3
HEBH08-019	0	-90	36.0	3.0	30.0	27.0	3.9
inc.				21.0	30.0	9.0	5.2
HEBH08-020	0	-90	36.0	6.0	36.0	30.0	2.2
inc.				21.0	24.0	3.0	5.7
HEBH08-022	0	-90	36.0	6.0	21.0	15.0	1.0
HEBHA08-030	0	-90	45.70	3.0	22.9	19.8	2.4
inc.				3.0	9.1	6.1	5.6
HEBHA08-031	0	-90	45.70	7.6	21.3	13.7	1.1
HEBHA08-036	0	-90	45.70	35.1	36.6	1.5	14.5
HEBH08-050	0	-90	36.0	3.0	36.0	33.0	1.7
HEBH08-051	0	-90	36.0	15.0	36.0	21.0	2.0
inc.				15.0	21.0	6.0	4.6
HEBH08-052	0	-90	36.0	6.0	36.0	30.0	1.7
inc.				15.0	18.0	3.0	5.2
HEBH08-053	0	-90	36.0	9.0	36.0	27.0	1.4
HEBH08-054	0	-90	36.0	9.0	27.0	18.0	0.7
HEBH08-055	0	-90	36.0	12.0	27.0	15.0	0.6
HEBH08-056	0	-90	36.0	9.0	27.0	18.0	0.6
HEBH08-057	0	-90	36.0	15.0	27.0	12.0	1.5

## Historical Data

- Narrower higher-grade intervals of up to **27.3g/t gold over 3.0m**
- Thicker intervals of mineralization ranging from **0.6g/t gold over 15.0m to 3.9g/t gold over 27m**
- Anticipated 1,200m drill program

Results are compiled from US Gold News Releases dated September 17, 2008. Southern Silver believes that the data is relevant and reliable however has not independently verified the data.

April 2010

# San Juan Project - Sinaloa



Surface expression of the San Juan vein; higher-grade mineralization is localized in 1 – 4 metre vein.

April 2010



# Minas de Ameca - San Luis

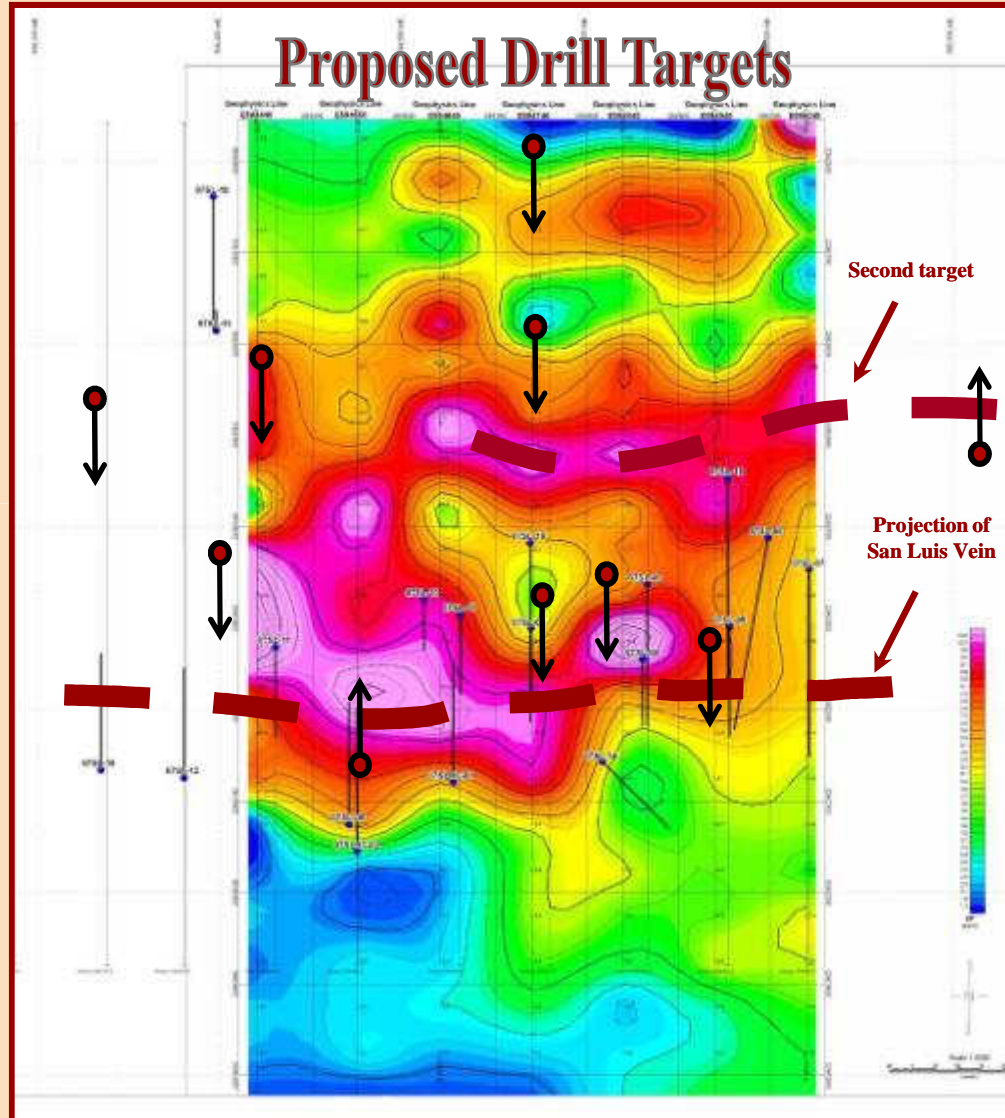
- 131 sq. km property with multiple mineral occurrences
- 2 Phases of diamond drill completed totaling 4,832m in 20 core holes
- Gold- copper mineralized area is defined
- Proposed 10 hole 1,500m drill program in Q3-2010



April 2010



# Minas de Ameca - San Luis



**19 drill holes (4,700m)**

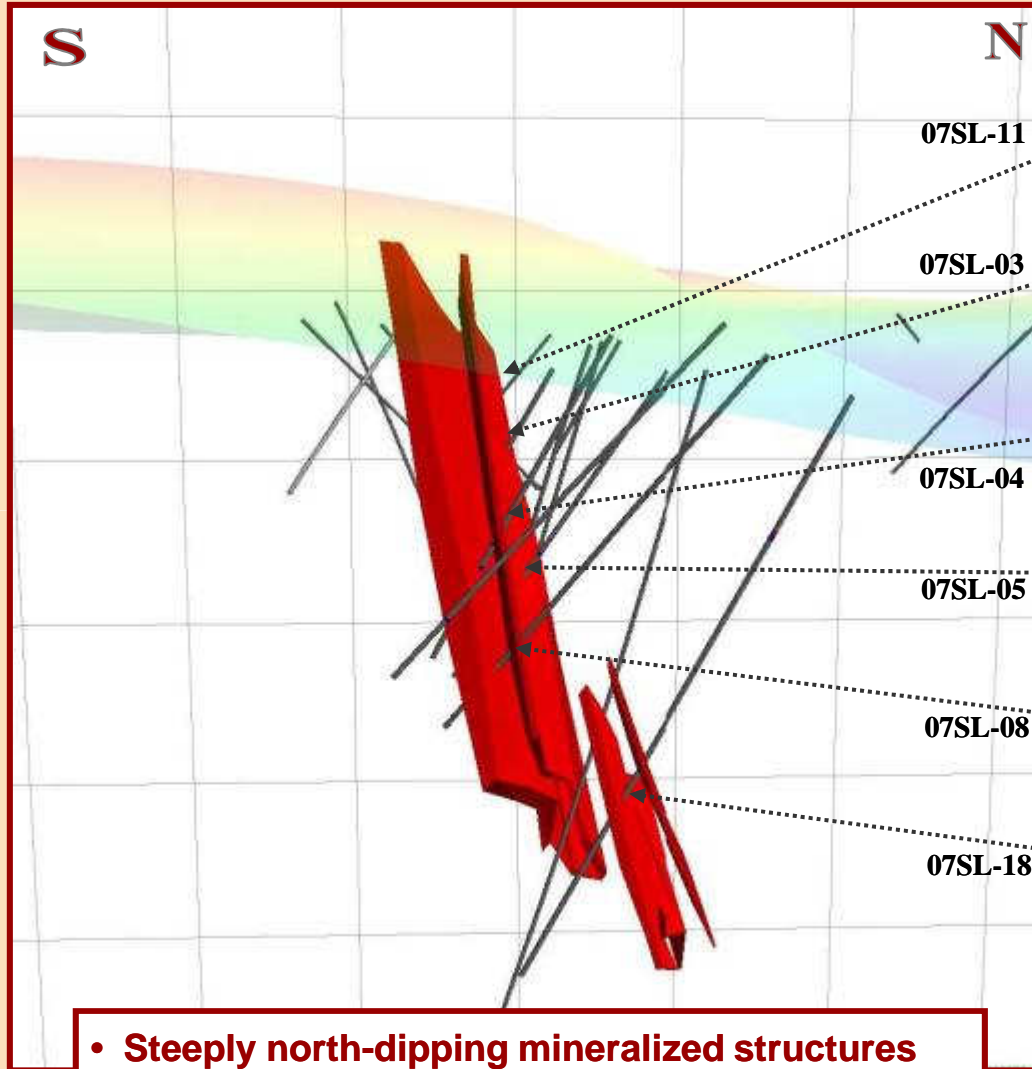
**Targeted Au-Cu-enriched  
qtz-hematite veins  
developed along the  
margin of a felsic  
intrusive and intersected  
broad mineralized zones  
of >1g/t Au**

**Proposed 2010**

**10 Drill holes (1,500m)**

April 2010

# San Luis – Mineralized Model



07SL-11	<b>1.50 g/t Au; 2.46 g/t Ag &amp; 0.28%Cu</b> <b>12.20m*</b>
07SL-03	<b>5.07 g/t Au; 49.81 g/t Ag &amp; 4.32%Cu</b> <b>3.35m*</b>
07SL-04	<b>2.05 g/t Au; 12.88 g/t Ag &amp; 0.34%Cu</b> <b>10.25m*</b>
07SL-05	<b>1.03 g/t Au; 12.15 g/t Ag &amp; 0.58%Cu</b> <b>21.40m*</b>
07SL-08	<b>1.14 g/t Au; 7.70 g/t Ag &amp; 0.86%Cu</b> <b>10.06m*</b>
07SL-18	<b>2.03 g/t Au; 14.35 g/t Ag &amp; 0.84%Cu</b> <b>6.85m*</b>

*\*Reported down hole thickness.*

- Steeply north-dipping mineralized structures
- +600m strike-length; 500m down-dip projection
- Polymetallic Au-Ag-Cu Veins and Breccias

April 2010

# San Luis – Drill Core



**08SL-19**

*Pyrite filling kaolinized fragments*

*April 2010*

# Southern Silver – US Projects



- **Oro:** Completed 1,645m drilling; new target areas identified
- **Dregon:** Drilling anticipated in May 2010

April 2010

# Oro – New Mexico

- Historic Mining District from the early 1900's; Multiple high-grade targets
- 11.5 sq. km project comprises 85 Federal Lode Claims; 8 Mineral Patents; 3 Surface Patents
- Located 55km south of Lordsburg New Mexico in the Little Hatchet Mountains
- Phase I Drilling completed
- Geophysics recommended

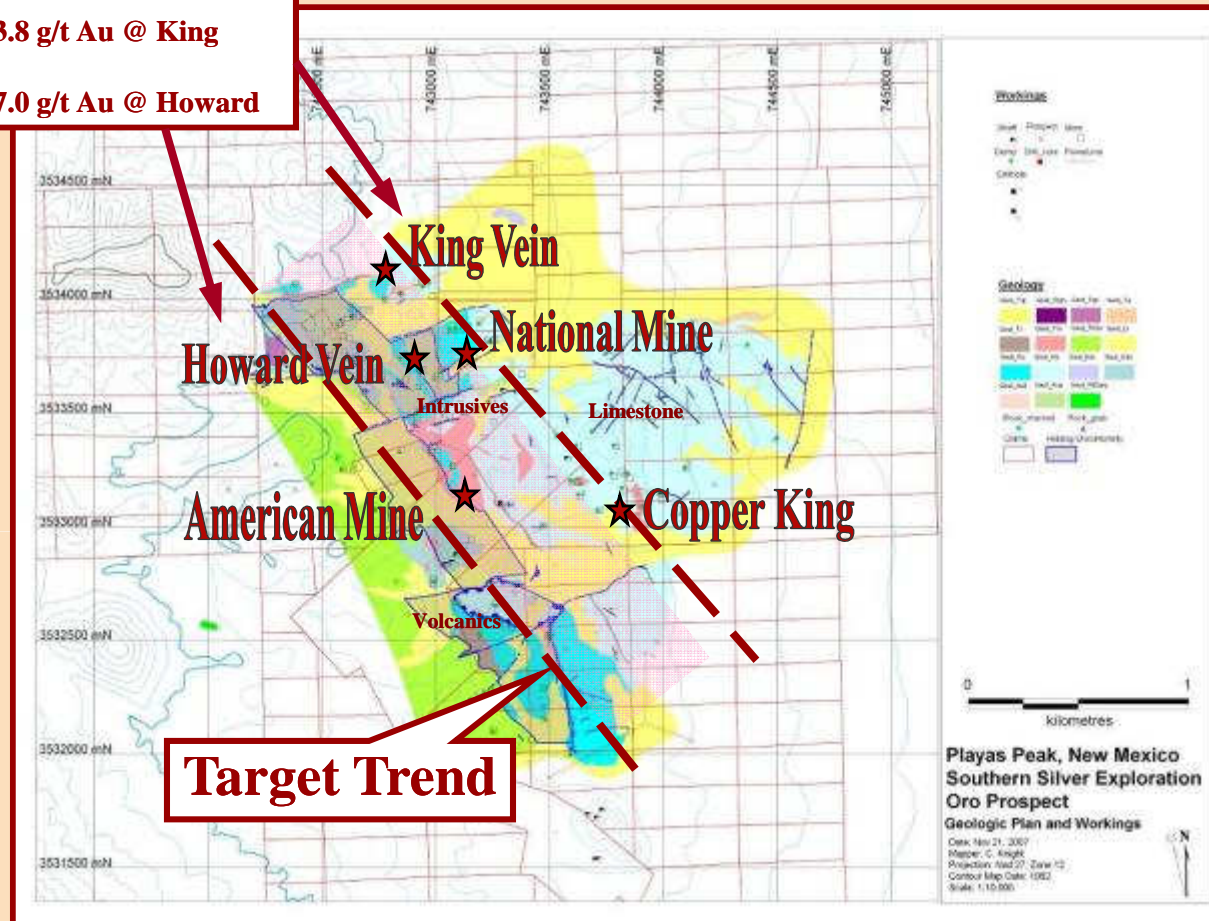
**Targets:** Three deposit models and target types

1. Bulk-tonnage, intrusion-related gold
2. Copper porphyry potential at depth
3. Polymetallic replacement/skarn deposits

# Oro

## SSV Surface Samples

- Up to 23.8 g/t Au @ King
- Up to 17.0 g/t Au @ Howard



- +2km long structural corridor
- 2010: Initial 1,200m of drilling completed
- New target areas identified

April 2010

# Dragoon - Arizona

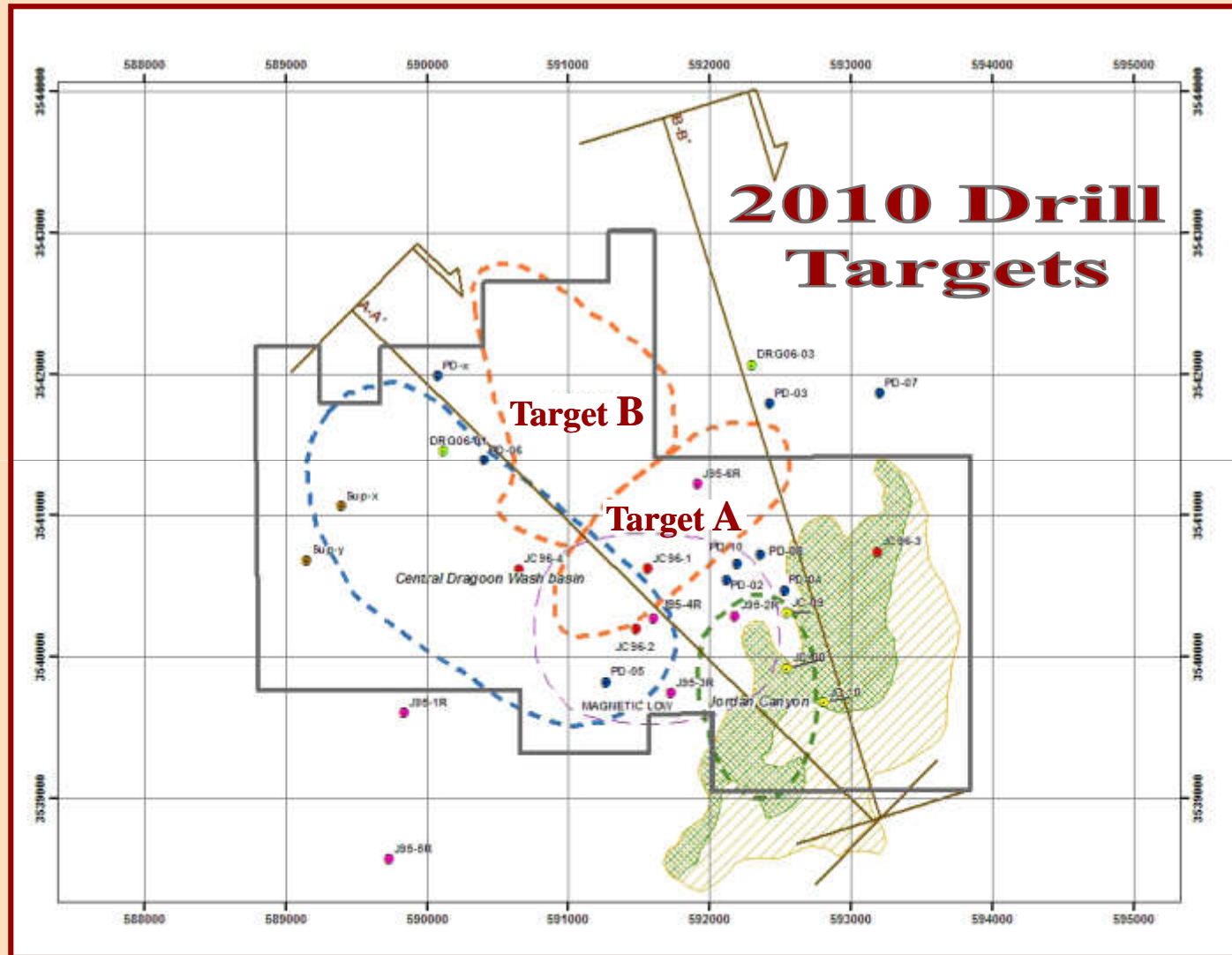
## Newly Optioned To Freeport McMoRan Exploration Corporation (FMEC)

- 68 Lode Mineral Claims and 4 State Leases
- Laramide porphyry Cu-Mo prospect
- Exposed Laramide intrusive; geothitic leached capping and local quartz-stockworks. Drill indicated Cu-Mo mineralization in gravel covered areas
- **Target:** Supergene-enriched Cu-mineralization beneath leached zone
- Proposed drill program May 2010

April 2010



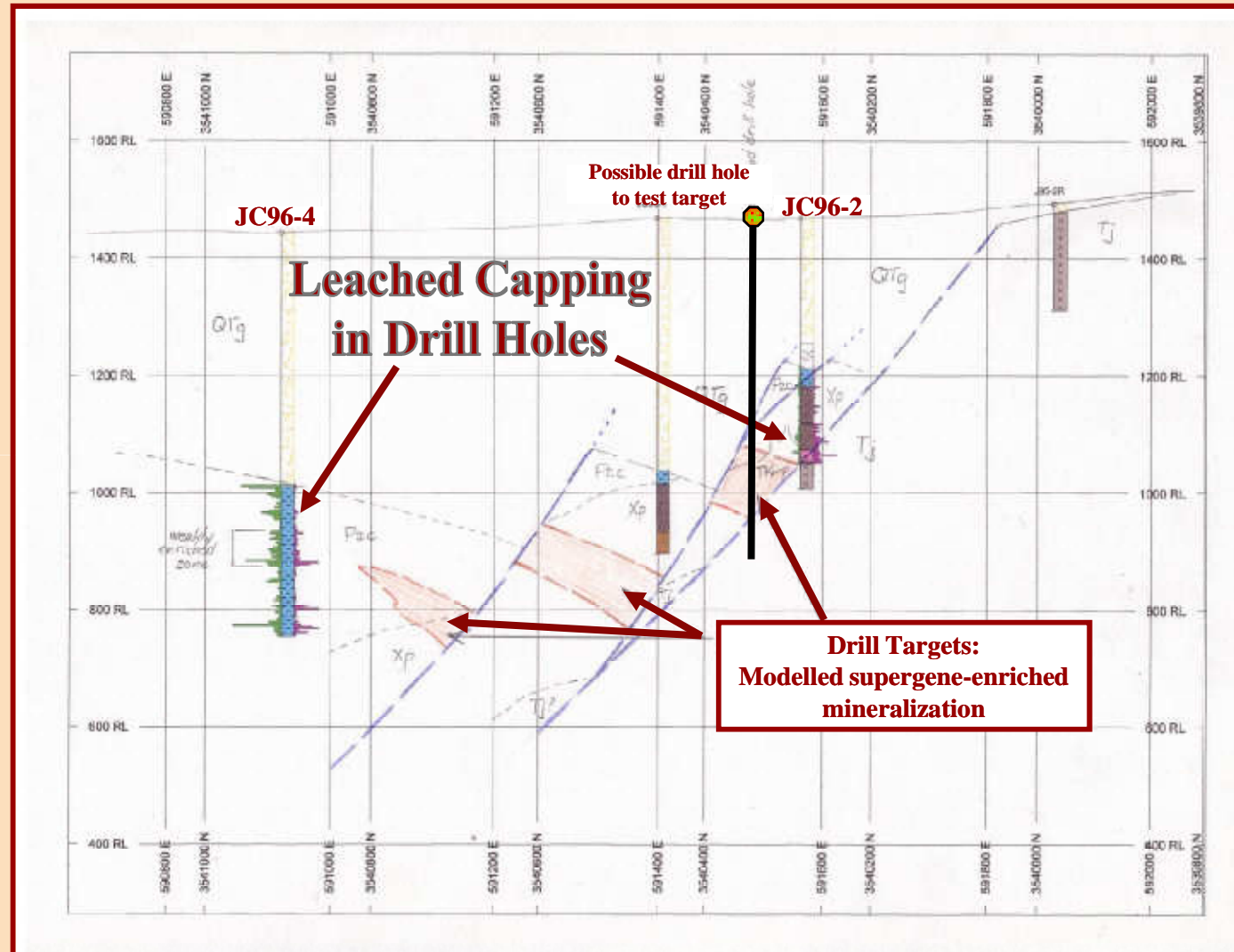
# Dragoon



Map showing target areas and lines of cross sections. Green Hatch are alteration patterns.

April 2010

# Dragoon – Conceptual Targeting



Detailed geologic relations in the center of section A-A'.

# 2010 Exploration Plan

## **San Juan, Sinaloa – Mexico**

- Planning and permitting

## **San Luis, Jalisco – Mexico**

- Drill Program in Q3

## **Oro, New Mexico – USA**

- Geophysics and minimum of 6 core holes to be tested

## **Dragoon, Arizona – USA**

- Proposed drill program in May

# Corporate Information

- **Symbol:** SSV - TSX.V  
FRANKFURT:SEG
- **Shares outstanding:** 64.9 million
- **Fully diluted:** 90.2 million
- **Year Hi – Low Range:** \$0.05 - \$0.25

# Officers and Directors

- Lawrence Page, QC - President, Director
- Mahesh Liyanage – CFO
- Arie Page - Secretary
- Scott Hean – VP Administration, Director
- Terrence Eyton - Director
- Dale Janowsky, QC- Director
- Roger Scammell, B.Sc. - Director
- Nazlin Rahemtulla - Director

*April 2010*

# Contact Information

#1100 – 1199 W. Hastings Street  
Vancouver BC, Canada  
V6E 3T5

Tel: 1-888-456-1112 *or* 1-604-684-9384

Fax: 1-604-688-4670

Email: [corpdev@mxltd.com](mailto:corpdev@mxltd.com)

Web: [www.southernsilverexploration.com](http://www.southernsilverexploration.com)

*April 2010*

