



**MEDUSA**

AN EXPANDING GOLD PRODUCER IN THE PHILIPPINES

# **INVESTOR PRESENTATION**

**April 2009**

# SNAPSHOT OF MEDUSA



- Expanding gold producer operating solely in the Philippines
- Debt free and un-hedged
- Anticipated long term cash costs circa US\$200 per ounce
- Resources of 1,203,000 ounces at 13.3 g/t gold at the Co-O Mine
- Phase 1 expansion on track for 60,000 ounces annualised Q3 2009
- Phase 2 expansion (independent of Phase 1) commenced and targeting 100,000 ounces annualised Q1 2010
- Excellent exploration upside: high grade vein and disseminated bulk gold targets, plus seven porphyry copper targets

# CAPITAL STRUCTURE



## CAPITAL STRUCTURE:

- Ordinary shares: 166,607,548
- Unlisted options: 5,030,000
- Market Capitalization (as at 14 April 2009)  
- A\$ 253M

## FINANCIALS:

- NPAT (6 months to 31 December 2008) - A\$ 12.0M
- Cash at Bank (as at 31 March 2009) - A\$ 27.6M
- No debt and un-hedged

**LISTINGS:** ASX and AIM (Code: MML)

## SHAREHOLDER INFORMATION:

Top 20 77.38%

### Substantial shareholders

Rex Harbour & Associates	11.30%
Gazmetall Holdings	10.50%
Advanced Concept	8.76%
Sprott Asset Management	5.37%

Directors and Management (inclusive of Advance Concept)	15.68%
--	--------

# SHARE PRICE PERFORMANCE (to 14 April 2009)



# DIRECTORS AND MANAGEMENT



- **Kevin Tomlinson** (Non-Executive Chairman)  
Geologist, directorships, corporate finance, resource analyst, UK based
- **Geoff Davis** (Managing Director/CEO)  
Geologist, public companies, 30 years in SE Asia, Australian based
- **Roy Daniel** (Finance Director/CFO)  
Accountant, corporate/financial roles, SE Asian experience, Australian based
- **Dr Robert Weinberg** (Non-Executive Director)  
Geologist, independent mining research analyst, UK based

## PHILIPPINES MANAGEMENT

- **Bill Phillips** (responsible for all mining activities)  
Specialist underground narrow vein miner, utilising air leg techniques
- **Samuel Afdal** (responsible for all administration matters and local affairs and relationships)  
Retired army colonel who has been in charge of Co-O since 1991

# PHILIPPINES MINING INVESTMENTS



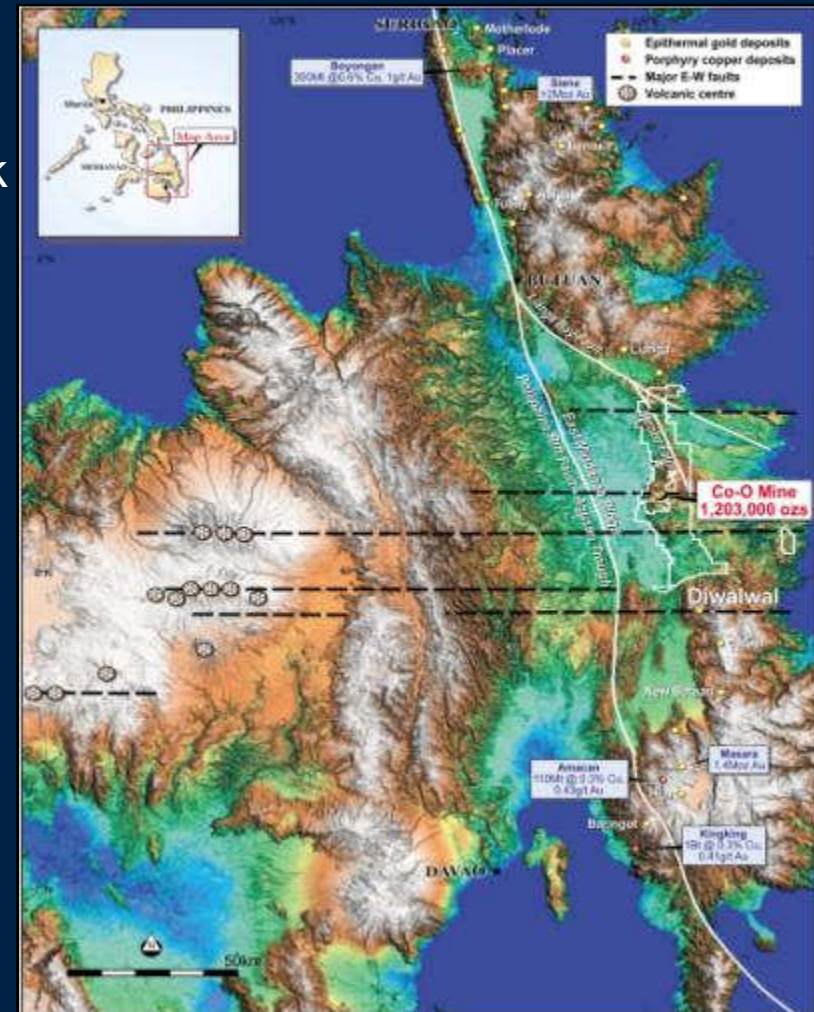
- Government support revitalising mining
- Increasing foreign investment
- Projects in feasibility studies and development
- New projects commenced production
- South of typhoon belt



# REGIONAL SETTING



- East Mindanao Ridge - richly endowed
- Excellent mineralised structural framework
- World class gold-copper deposits
- Long mining history
- Major recent discoveries



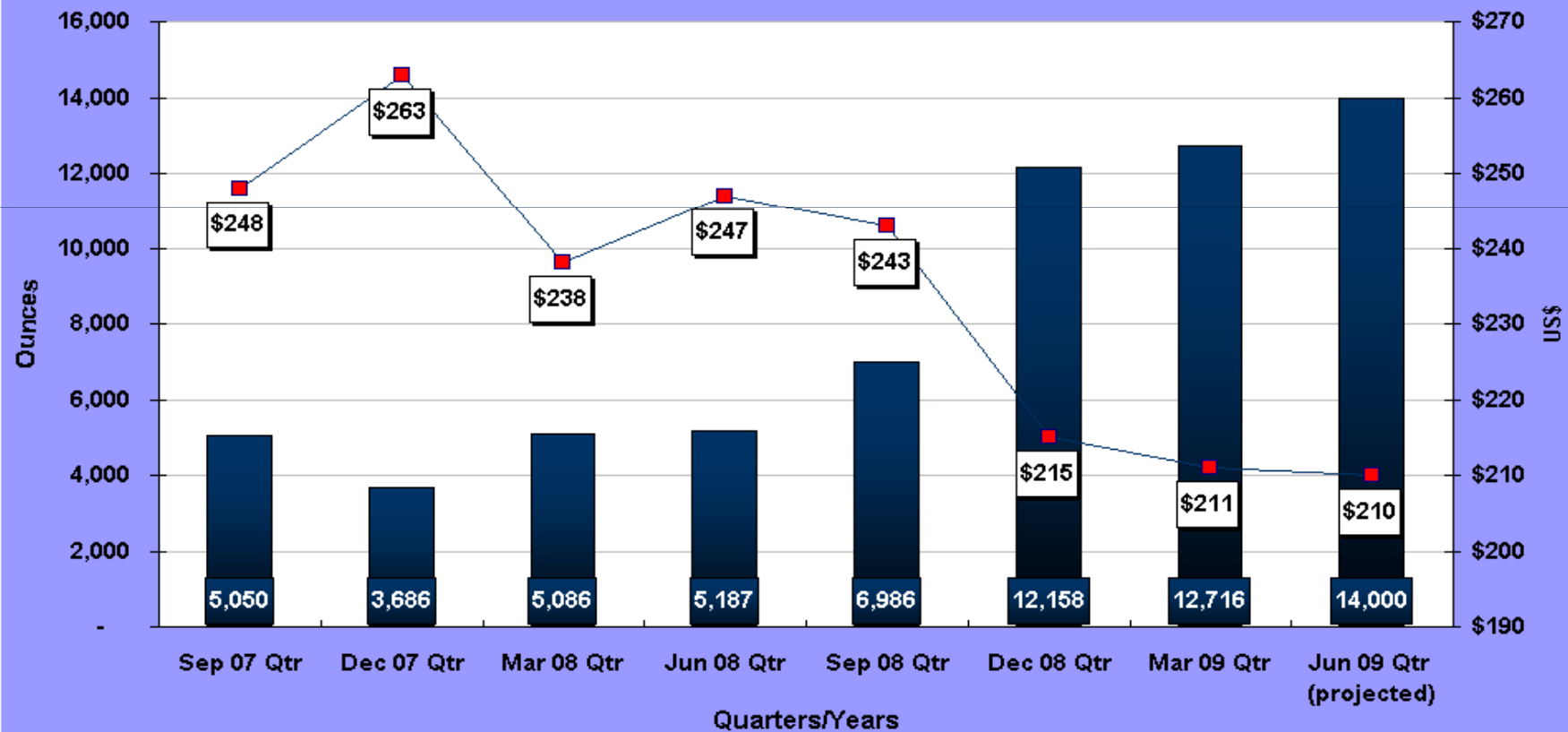
# Co-O PLANT & INFRASTRUCTURE



- Current CIP plant capacity of 500 tpd (will be upgraded to approximately 1,000 tpd)
- Grid power at Mine and Mill (standby power station at each site)
- 99% local workforce
- On site assay laboratory and support services
- Best industry health & safety standards



# Co-O QUARTERLY GOLD PRODUCTION



# Co-O RESOURCES (as at 15 December 2009)



CATEGORY	TONNES	GRADE	OUNCES
Indicated resources	1,110,000	13.4	480,000
Inferred resources	1,710,000	13.2	723,000
<b>Total Resources</b>	<b>2,820,000</b>	<b>13.3</b>	<b>1,203,000</b>

Note: Resource estimates are quoted using zero g/t gold lower cut-off and undertaken by Cube Consulting Pty Ltd (2009).

# Co-O MINE, EXPLORATION & PRODUCTION



- 25 year Mining Licence, renewable
- Vertical and horizontal continuity, open at depth and along strike
- Resource drilling continuing
- Expansion programme

Phase 1: 60,000 annualised ounces from 3<sup>rd</sup> qtr 2009

Phase 2: 100,000 annualised ounces from 1<sup>st</sup> qtr 2010

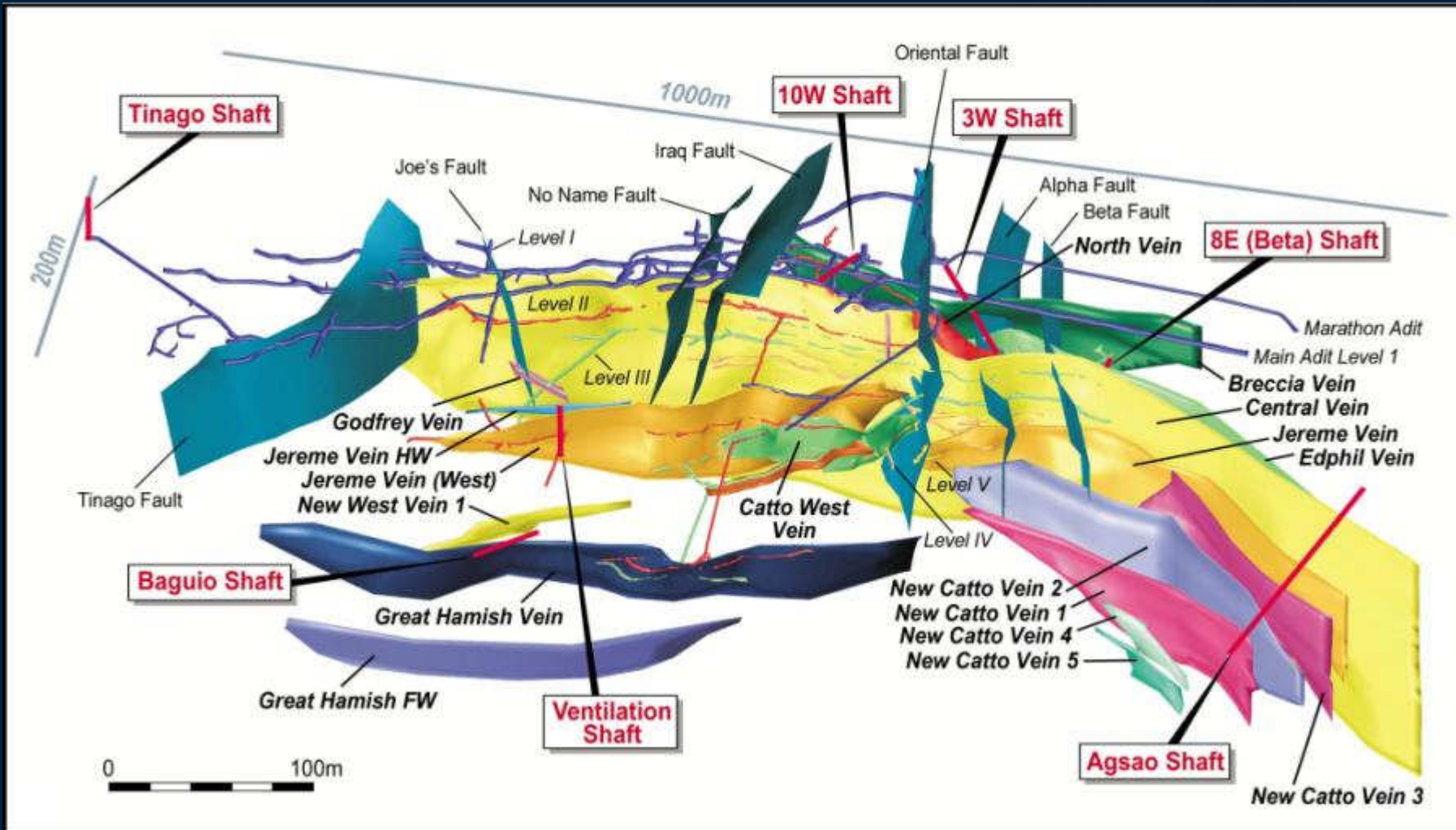
- Planned production

Period	Range
12 months to 30 June 2009	45,000 ozs
12 months to 30 June 2010	80,000 ozs

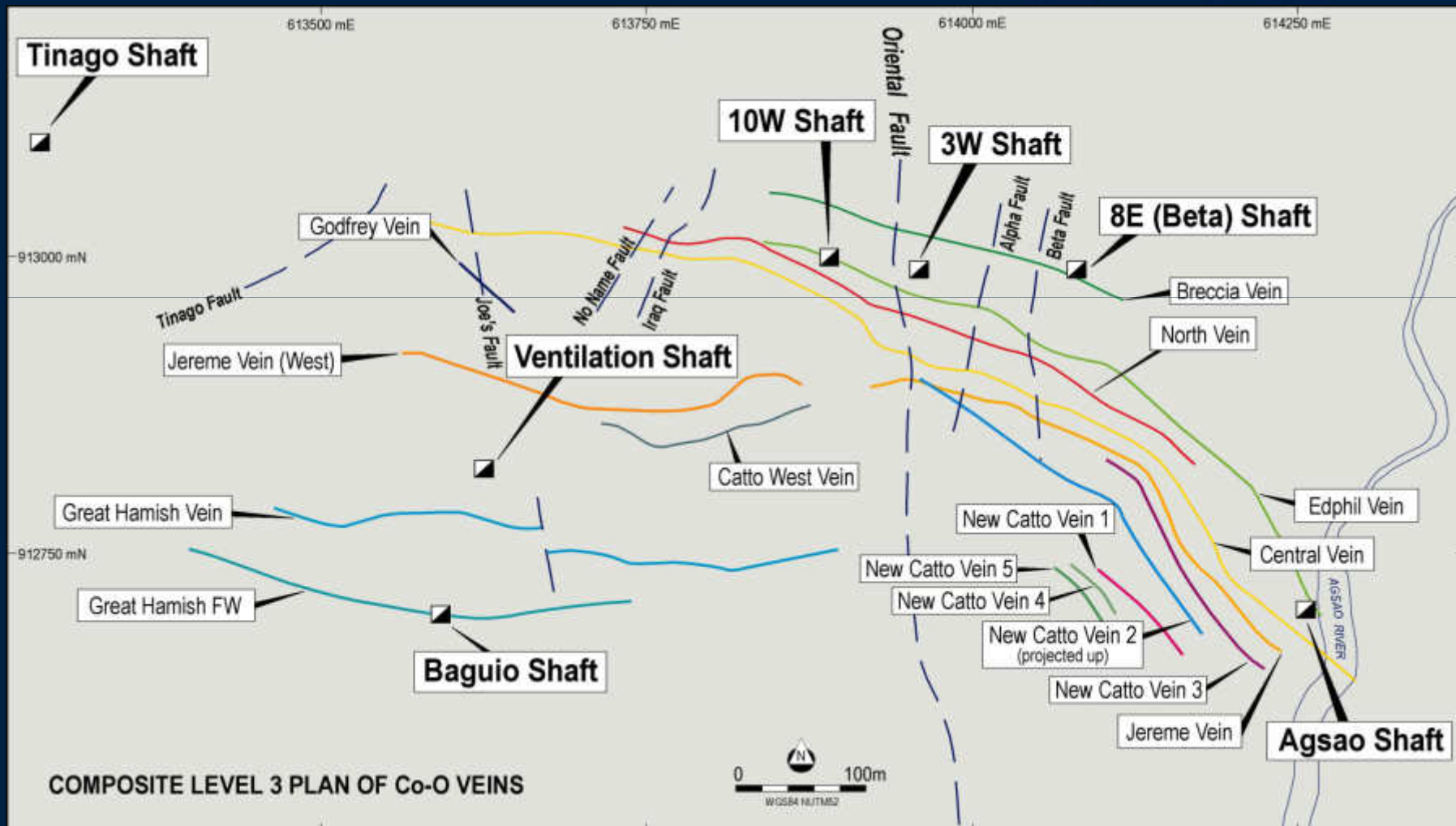
Subject to normal mining conditions



# Co-O MINE 3D VEIN MODEL



# Co-O MINE COMPOSITE LEVEL PLAN



# EXPLORATION POTENTIAL



- Contiguous tenements of > 820 km<sup>2</sup>
- Over 70 km of strike length

## POTENTIAL FOR:

### GOLD:

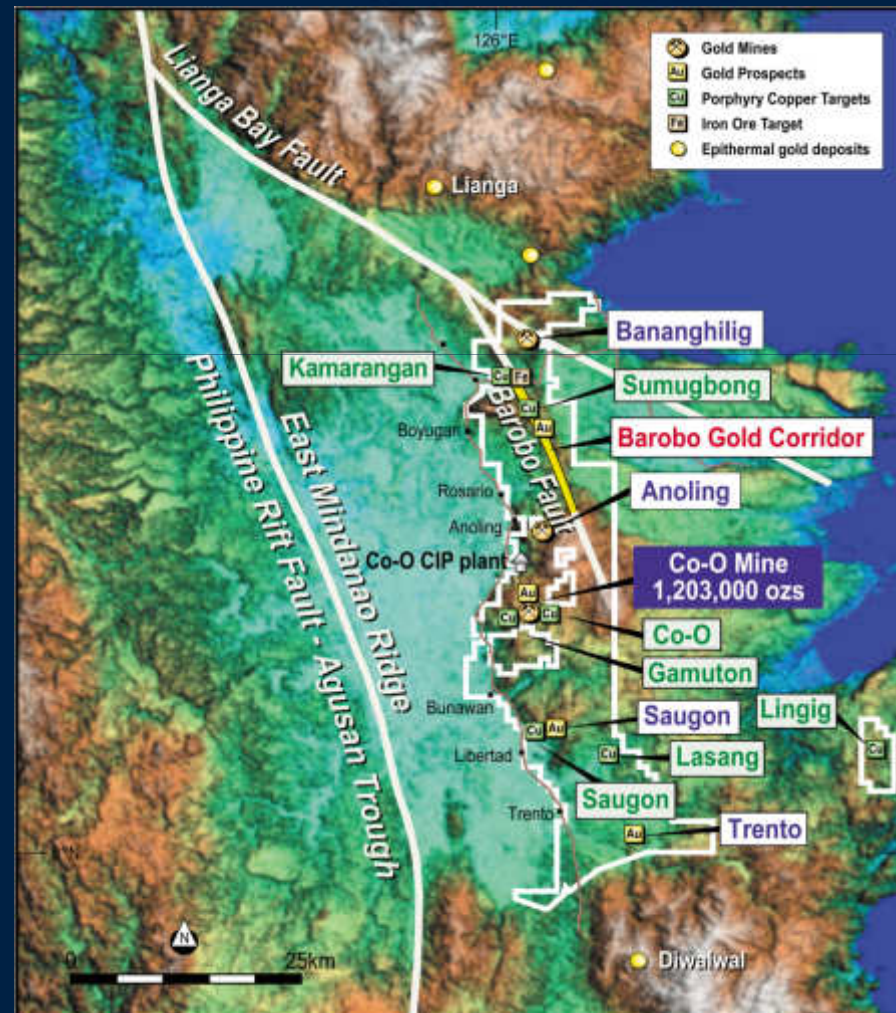
- Multiple high grade vein targets
- Bulk disseminated gold targets

### COPPER:

Seven porphyry copper-gold targets

### Drilling:

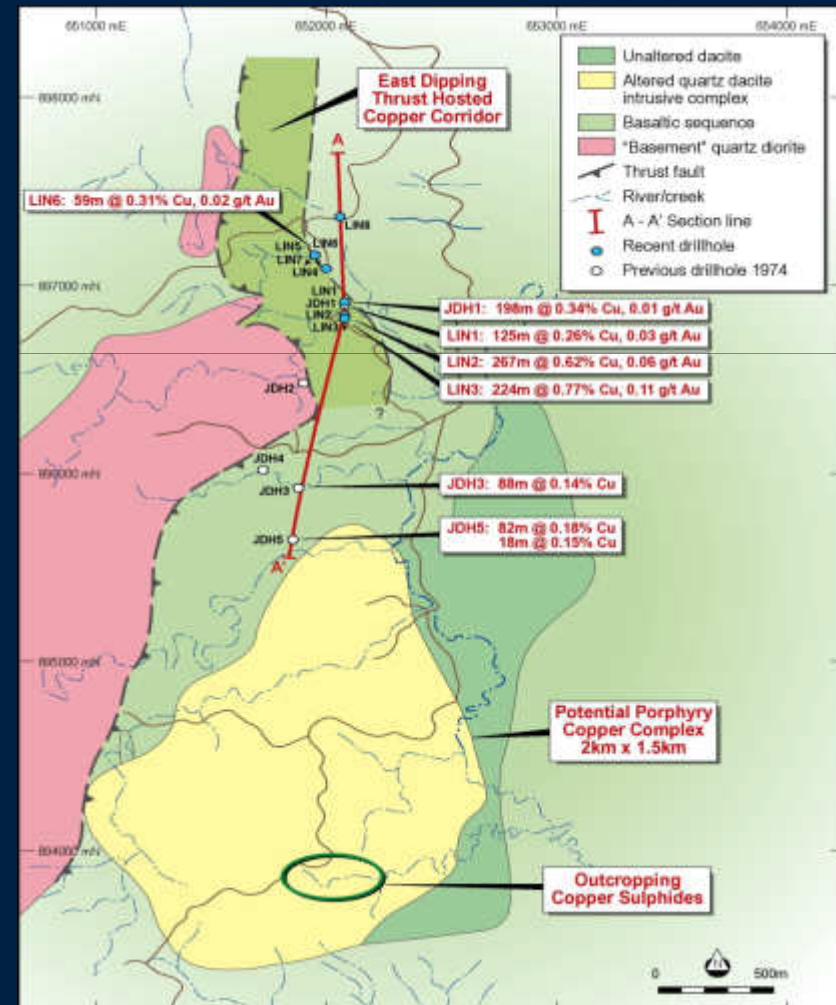
- On-going at Lingig
- Completed at Kamarangan



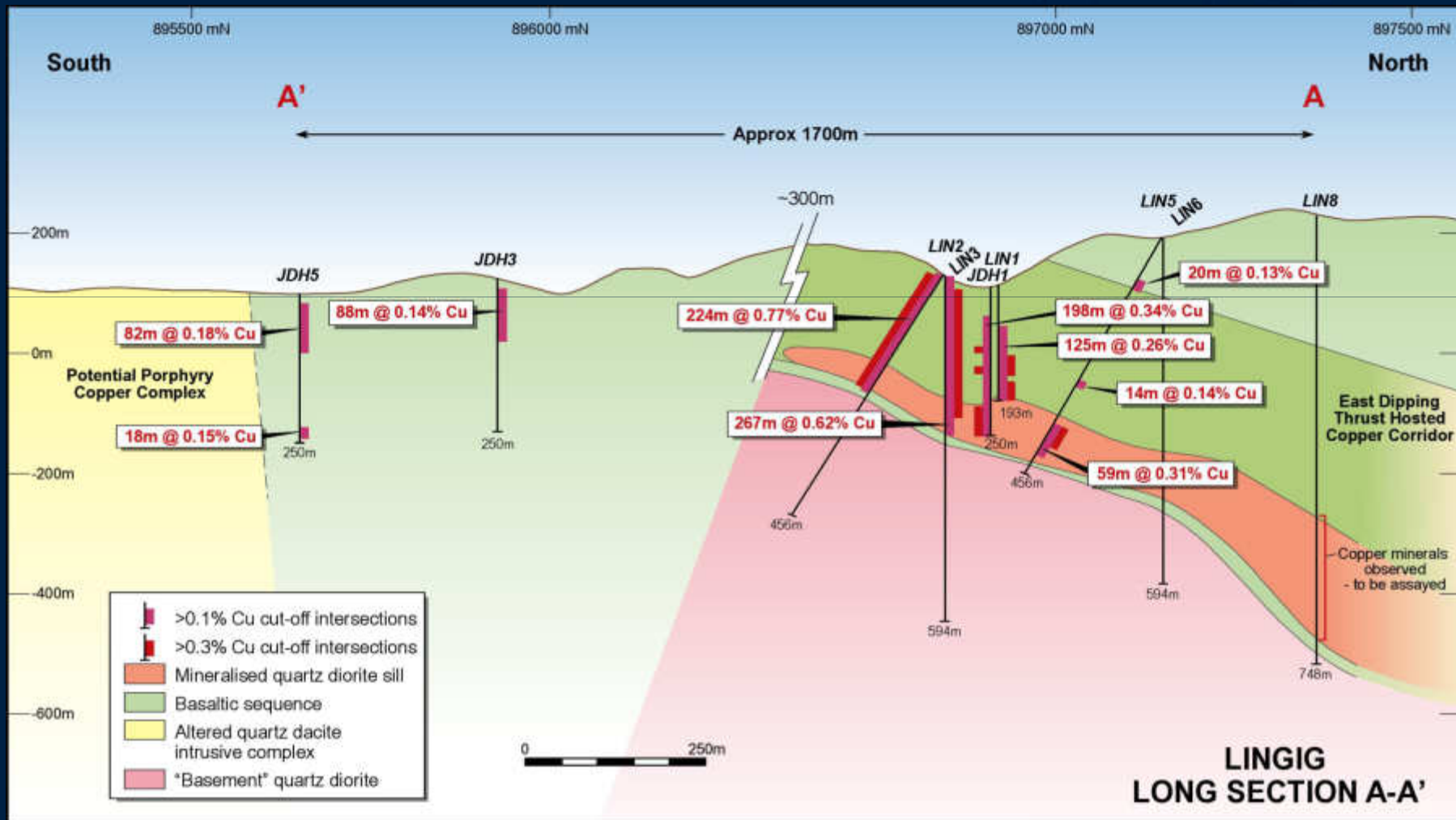
# LINGIG COPPER DISCOVERY



- Thrust-hosted mineralisation
  - Ore-grade intersections
  - Similar to Atlas deposits of 1.53B tonnes
- Potential large porphyry copper target
- Drilling on-going



# LINGIG LONGITUDINAL PROJECTION



# SOCIAL PROGRAMMES



- Educational Assistance
  - Scholarships
  - Adopt-a-school programmes
- Co-O Mine 16 bed hospital with doctor
- Community Development
  - Micro loans to rice farmers
  - Day care & community health centres
  - Road maintenance and bridge building
  - Construction of community buildings
  - Water projects
- Environmental Protection Enhancement
  - Environmental monitoring
  - Re-afforestation programmes



# WHY MEDUSA!!



- Low cost (anticipated long term cash cost circa US\$200 per oz), high margin gold producer
- Debt free and un-hedged
- Increasing production profile
- Expanding resource base
- Large contiguous tenement holding, > 820 km<sup>2</sup> with
  - high grade vein deposits
  - disseminated gold targets
  - porphyry copper-gold targets

# IMPORTANT NOTICE



This presentation contains only a brief overview of Medusa Mining Limited and its associated entities (“Medusa”) and their respective activities and operations. The contents of this presentation (including matters relating to the geology of Medusa’s projects), may rely on various assumptions and subjective interpretations which is not possible to detail in this presentation and which have not been subject to any independent verification.

This presentation contains a number of forward-looking statements. Known and unknown risks and uncertainties, as well as factors outside of Medusa’s control, may cause the actual results, performance and achievements of Medusa to differ materially from those expressed or implied in this presentation. Medusa does not warrant the accuracy, currency or completeness of the information with respect to forward-looking statements contained in this presentation, nor the future performance of Medusa.

To the maximum extent permitted by law, Medusa and its officers, employees and advisers are not liable for any loss or damage (including, without limitation, any direct, indirect or consequential loss or damage) suffered by any person directly or indirectly as a result of relying on this presentation or otherwise in connection with it.

The information contained in this presentation is not a substitute for detailed investigation or analysis of any particular issue and has been prepared without consideration of your objectives and needs and financial position. Current and potential investors and shareholders should seek independent advice before making any investment decision in regard to Medusa or its activities.

## JORC COMPLIANCE - CONSENT OF COMPETENT PERSONS

Information in this report relating to **Mineral Resources** has been estimated and compiled by Mark Zammit of Cube Consulting Pty Ltd. Mr Zammit is a member of The Australasian Institute of Mining & Metallurgy and has sufficient experience that is relevant to the style of mineralisation and type of deposit under consideration and to the activity which he is undertaking to qualify as a Competent Person as defined in the 2004 Edition of the “Australian Code for Reporting of Exploration Results, Mineral Resources and Ore Reserves”. Mr Zammit consents to the inclusion in the report of the matters based on his information in the form and context in which it appears.

Cube Consulting is an independent Perth based resource industry consulting firm specialising in geological modelling, resource estimation and information technology.



**MEDUSA**

[www.medusamining.com.au](http://www.medusamining.com.au)