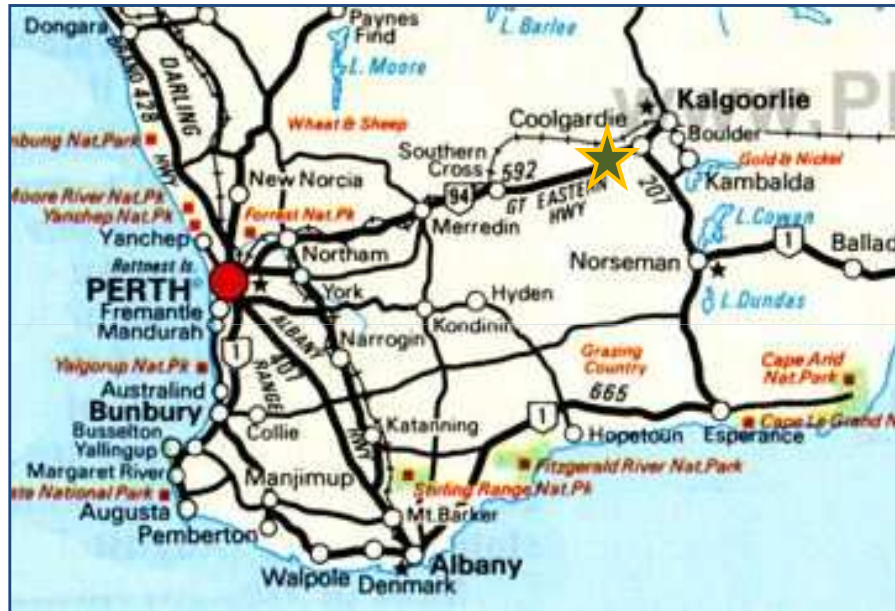




Western Australian



Emerging Gold Producer

April 2011



Important Notice

These presentation slides (the "Slides") do not comprise an admission document, listing particulars or a prospectus relating to GGG Resources Plc ("the Company") or any subsidiary of the Company, do not constitute an offer or invitation to purchase or subscribe for any securities of the Company and should not be relied on in connection with a decision to purchase or subscribe for any such securities. The Slides and the accompanying verbal presentation do not constitute a recommendation regarding any decision to sell or purchase securities in the Company.

The Slides and the accompanying verbal presentation are confidential and the Slides are being supplied to you solely for your information and may not be reproduced or distributed to any other person or published, in whole or in part, for any purpose. No reliance may be placed for any purpose whatsoever on the information contained in the Slides and the accompanying verbal presentation or the completeness or accuracy of such information. No representation or warranty, express or implied, is given by or on behalf of the Company, Collins Stewart Europe Limited or their respective shareholders, directors, officers or employees or any other person as to the accuracy or completeness of the information or opinions contained in the Slides and the accompanying verbal presentation, and no liability is accepted for any such information or opinions (including in the case of negligence, but excluding any liability for fraud).

The Slides contain forward-looking statements, which relate, inter alia, to the Company's proposed strategy, plans and objectives. Such forward-looking statements involve known and unknown risks, uncertainties and other important factors beyond the control of the Company that could cause the actual performance or achievements of the Company to be materially different from such forward-looking statements. Accordingly, you should not rely on any forward-looking statements and the Company accepts no obligation to disseminate any updates or revisions to such forward-looking statements.

The Slides and their contents are directed only at persons who fall within the exemptions contained in Articles 19 and 49 of the Financial Services and Markets Act 2000 (Financial Promotion) Order 2005 (such as persons who are authorised or exempt persons within the meaning of the Financial Services and Markets Act 2000 and certain other persons having professional experience relating to investments, high net worth companies, unincorporated associations or partnerships and the trustees of high value trusts) and persons to whom distribution may otherwise lawfully be made. Any investment, investment activity or controlled activity to which the Slides relate is available only to such persons and will be engaged in only with such persons.

Persons of any other description, including those that do not have professional experience in matters relating to investments, should not rely or act upon the Slides.

The Slides should not be distributed, published, reproduced or otherwise made available in whole or in part by recipients to any other person and, in particular, should not be distributed to persons with an address in the United States of America, Australia, the Republic of South Africa, the Republic of Ireland, Japan or Canada or in any other country outside the United Kingdom where such distribution may lead to a breach of any legal or regulatory requirement. No securities commission or similar authority in Canada has in any way passed on the merits of the securities offered hereunder and any representation to the contrary is an offence. No document in relation to the Placing has been, or will be, lodged with, or registered by, The Australian Securities and Investments Commission, and no registration statement has been, or will be, filed with the Japanese Ministry of Finance in relation to the Placing or the Shares. Accordingly, subject to certain exceptions, the Shares may not, directly or indirectly, be offered or sold within Canada, Australia, Japan, South Africa or the Republic of Ireland or offered or sold to a resident of Canada, Australia, Japan, South Africa or the Republic of Ireland.

The Securities have not been, and will not be, registered under the United States Securities Act of 1933, as amended (the "US Securities Act") or with any securities regulatory authority of any state or other jurisdiction of the United States and may not be offered or sold within the United States or to, or for the account or benefit of, any US Person as that term is defined in Regulation S under the US Securities Act. The Company has not been registered and will not register under the United States Investment Company Act of 1940, as amended.

The Slides and their contents are confidential and should not unless otherwise agreed in writing by Collins Stewart Europe Limited be copied, distributed, published or reproduced (in whole or in part) or disclosed by recipients to any other person.

Collins Stewart Europe Limited, which is authorised and regulated by the Financial Services Authority, is advising the Company and no one else in relation to the proposed Placing and Admission and will not be responsible to anyone other than the Company for providing the protections afforded to customers of Collins Stewart Europe Limited. Any other person should seek their own independent legal, investment and tax advice as they see fit. Collins Stewart Europe Limited's responsibilities as the Company's Broker under the AIM Rules will be owed solely to the London Stock Exchange plc and not to the Company, to any of its directors or any other person in respect of a decision to subscribe for or acquire shares or other securities in the Company. Collins Stewart Europe Limited has not authorised the contents of, or any part of, the Slides and no representation or warranty, express or implied, is made by as to any of its contents.



Corporate Overview

- **GGG Resources PLC is developing its fully permitted Bullabulling gold mine in Western Australia with its 50:50 Australian JV partner**

- **Highlights:**
 - **54% economic interest in circa 2,000,000oz gold JORC inferred resource**
 - **Near surface bulk tonnage 41.5 Mt @ 1.5g/t gold deposit cut off 0.7g/t**
 - **Significant exploration upside over 14km and to depth below 120m**
 - **Feasibility study commenced Q3 2010, completion due Q4 2011**
 - **\$23m in cash (post ASX listing) and 8.5% holding in JV partner (ASX:AZX)**
 - **Offering for remaining Auzex shares**

- **Shares in issue: 167,923,590 (AIM:GGG; including ASX: GGB)**

- **Major shareholders: Directors (6.6%), Baker Steel (8.6%), BlackRock (4.4%), Auzex (4.2%), CQS (3.1%), Henderson Global (3.1%) and Phoenix Gold Fund**



Offering for Auzex

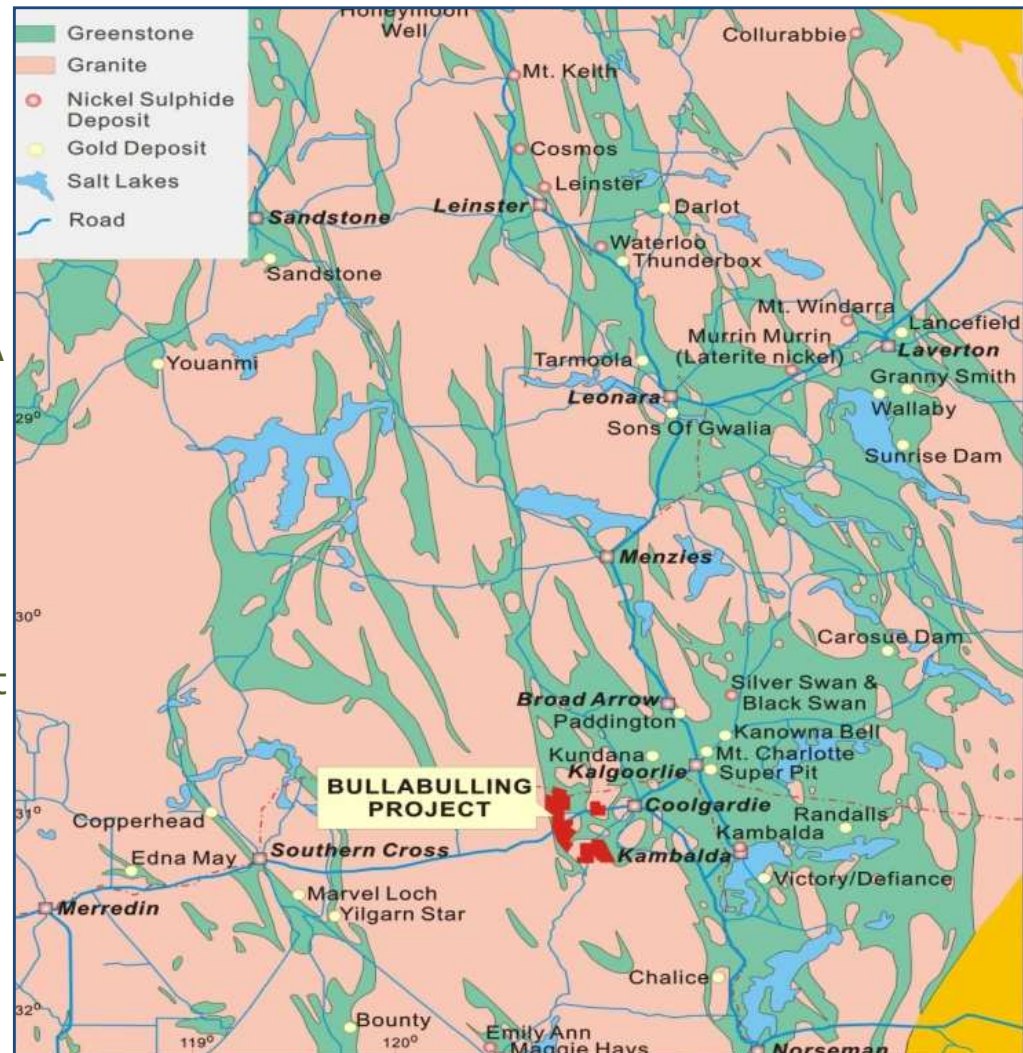
- **Highlights:**
 - **Already own 8.4% of Auzex (AZX)**
 - **7 GGG shares for every 5 AZX shares (A\$ 95 million value)**
 - **39.3% premium on AZX share price as at 11 March 2011**
 - **Merger of equals, 49% to AZX shareholders**

- **Rationale:**
 - **Sole focus on building Bullabulling gold asset**
 - **Building a high value Western Australian gold company**
 - **Accelerates exploration and development**
 - **Access to two capital markets**



WA-Gold Country

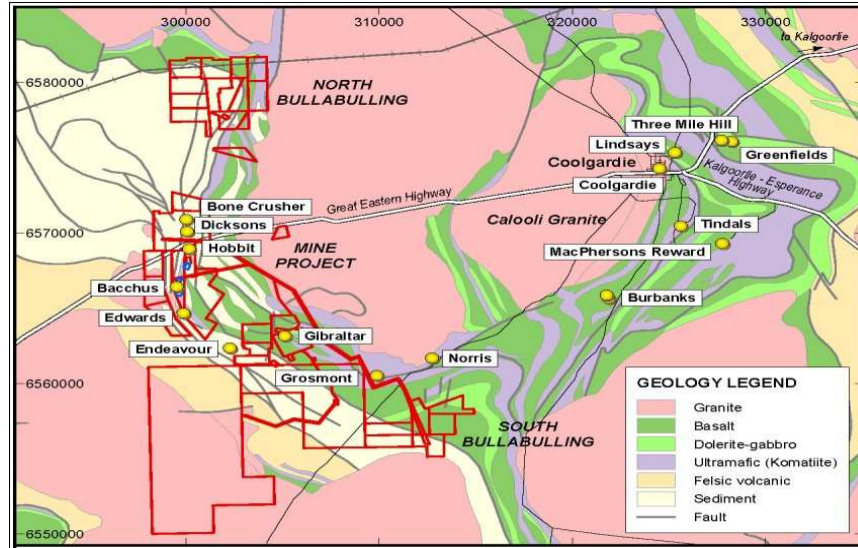
- Resource August 2010 1.98 Moz JORC inferred
- Located in the Coolgardie goldfields, WA
- Part of the Yilgarn Craton with over 160 gold deposits, 19 of which are over 3 Moz
- 70km SW of 76 Moz Kalgoorlie Super Pit
- Samantha/Resolute produced 370,000 ounce of gold from 7.9 Mt. @ 1.45g/t until 1998 from laterite, supergene and primary ore





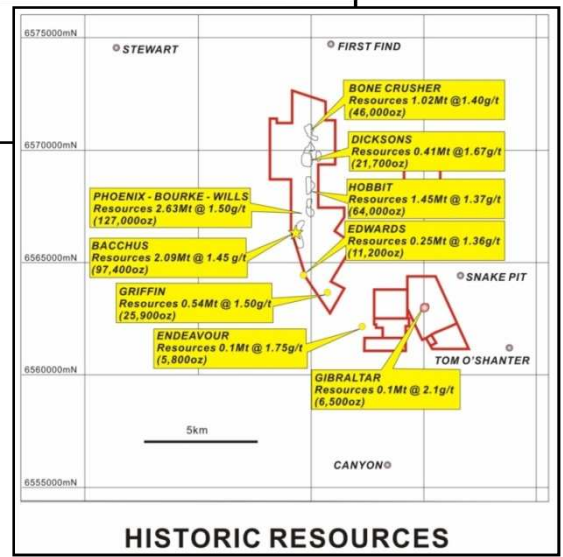
Historic Mine

- Licensed mine with water, road & power
- Over 144km² permitted area, incl. pastoral lease
- No native title issues
- A\$1.2m environmental bond in place
- Estimated A\$30m worth of data
- Over 12,000 historic holes drilled
- Historic drilling averages 34m only
- Pits circa 30m deep, with deepest pit ~80m



At depth high grade mineralisation not included in current JORC resource:

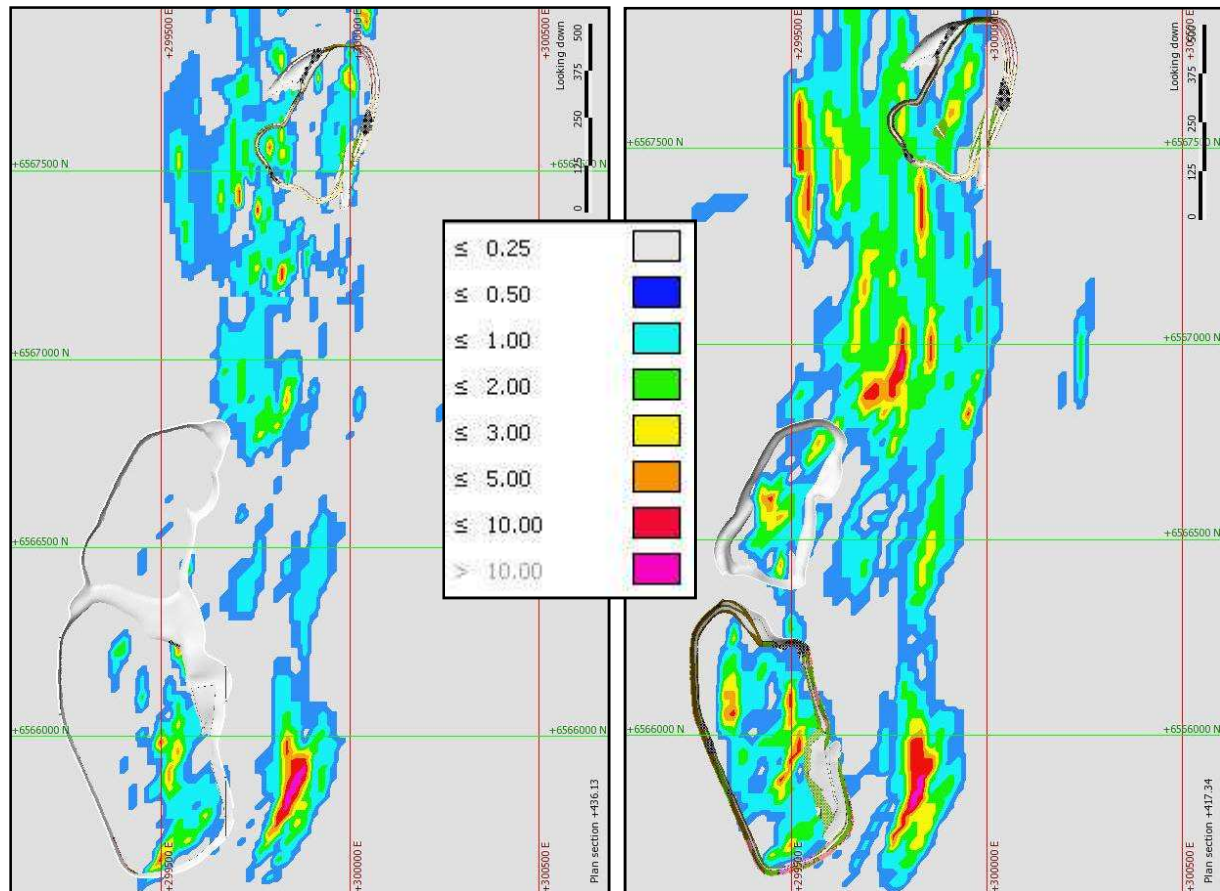
- **Bacchus**
 - 7m@77g/t,
 - 5m@14g/t,
 - 4m@5.1g/t,
 - 3m@4.4g/t,
 - 3m@9.2g/t
- **Dicksons** 4m@14.5g/t
- **Hobbit** 9m@10.5g/t
- **Edwards** 9m@11.9g/t
- **Endeavour** 3m@21.2g/t





1.98 Moz Gold and Growing

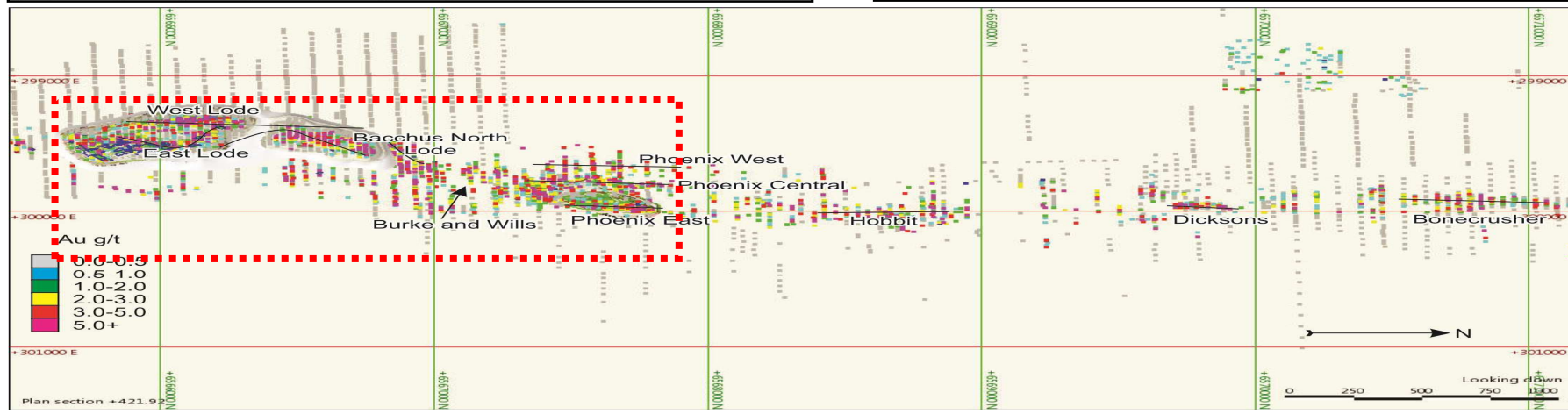
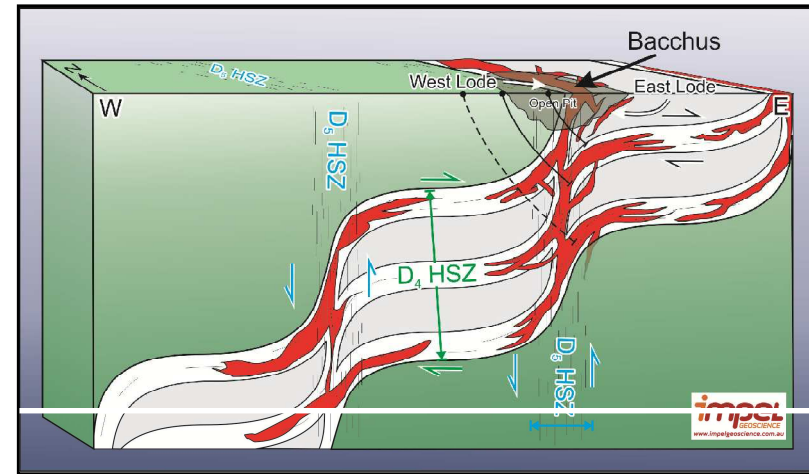
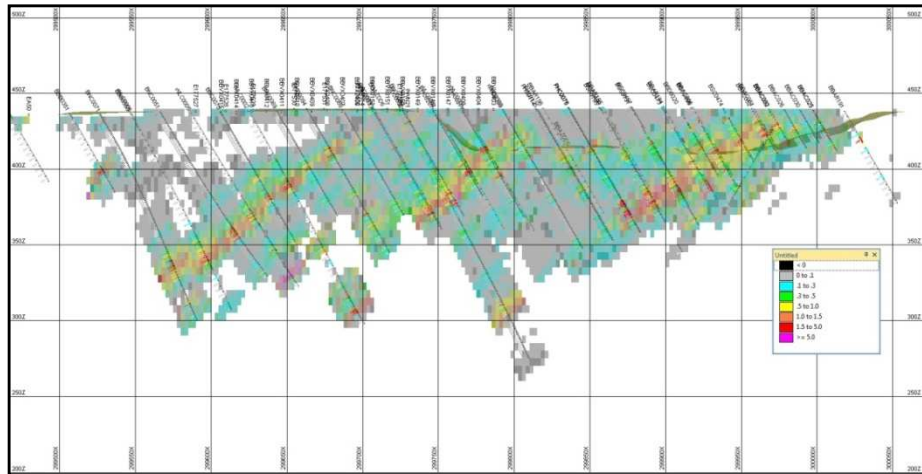
- Continuity of 3-4g/t gold within broader 0.5-1.5g/t envelope
- Initial JORC resource increased in August 2010 by 450% to circa 1.98 Moz, 41.5 Mt 1.5g/t gold
- JORC based on surface to 120m deep with 0.7g/t cut-off
- 40m section drill holes; mainly on 2.2km long Bacchus to Phoenix area
- Open in all directions with 14km strike length
- Current drilling identifies lateral and depth extension



Left 40m depth, Right 60m depth. Dark Blue <0.5 g/t, Light Blue < 1g/t, Green < 2g/t, Yellow < 3g/t, Orange < 5g/t, Red < 10g/t, Purple > 10g/t



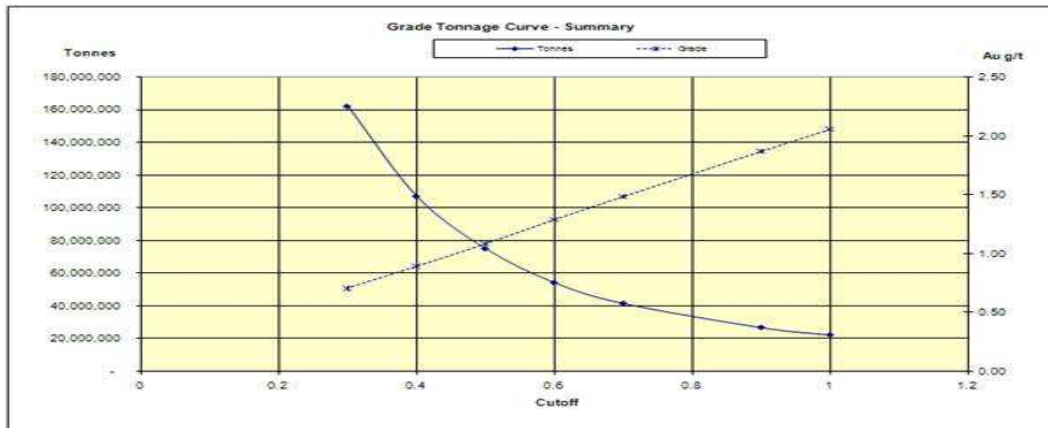
Consistent and Continuous Gold Mineralisation



Approx 6. km

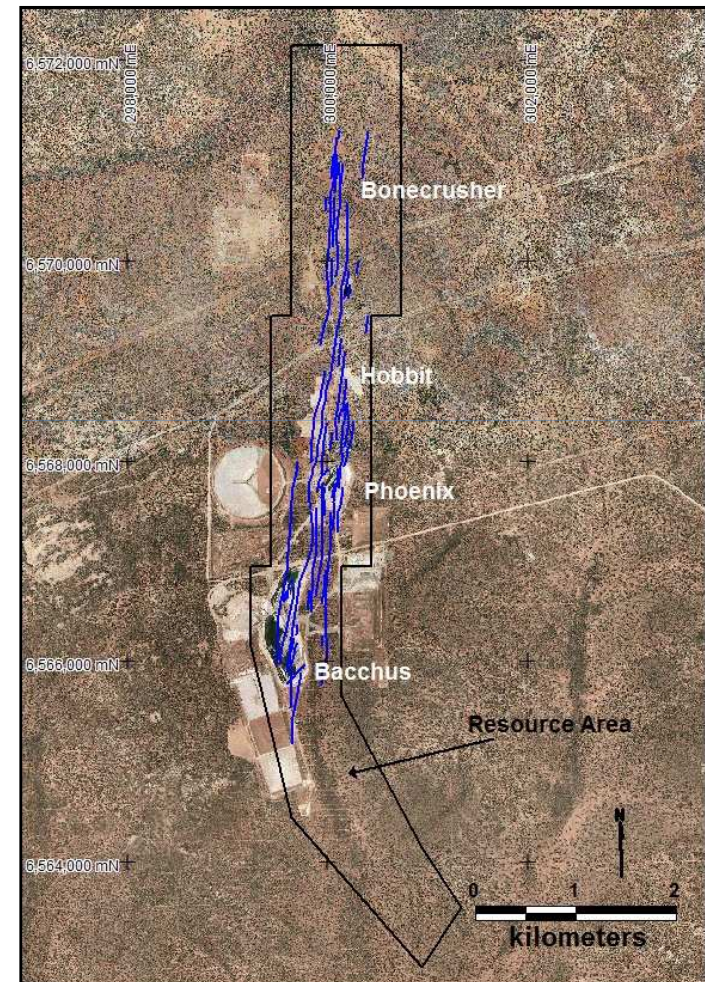


Flexible Gold Price Project



Bullabulling Grade Tonnage Curve estimated by CSA Global, August 2010, at different cut-off grades for mineralisation less than 120 metres below surface. Ordinary Kriged method.

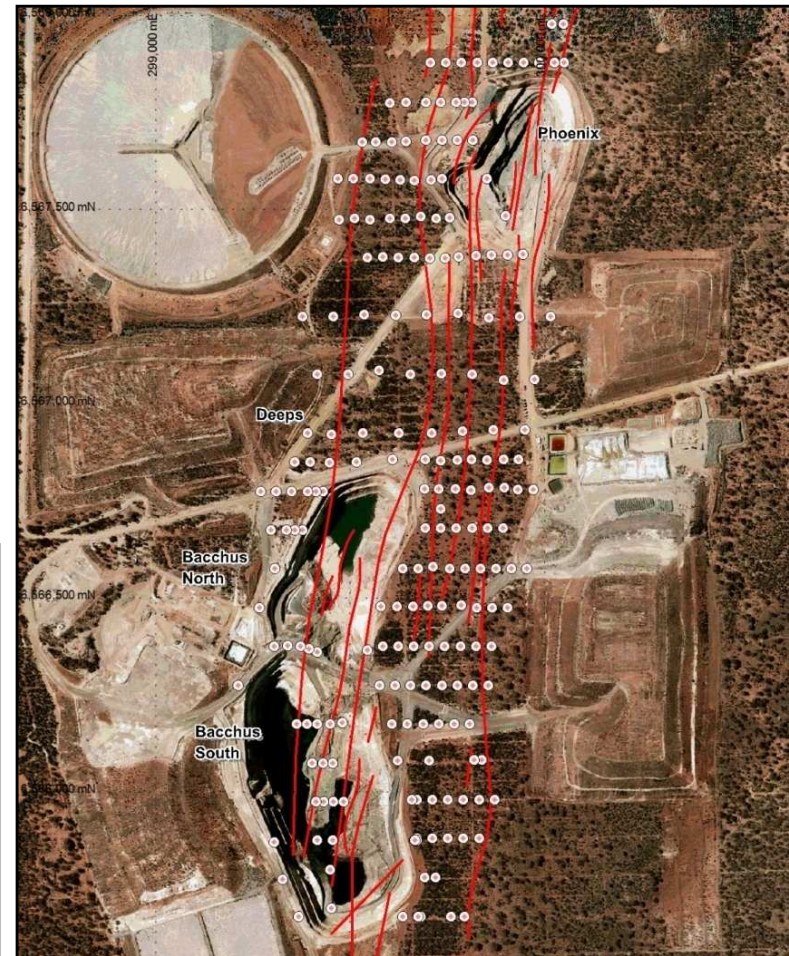
Cut-off g/t gold	Tonnes	Average Grade gold g/t	Contained Ounces
1	22,202,000	2.06	1,468,400
0.9	26,739,000	1.87	1,606,500
0.7	41,517,000	1.48	1,981,600
0.6	54,231,000	1.29	2,245,900
0.5	75,013,000	1.08	2,611,800
0.4	107,094,000	0.89	3,071,800
0.3	162,171,000	0.71	3,683,200





Bullabulling Fast Track Mine Development

- Currently drilling 24,000m mainly in 2.3km area between Bacchus and Phoenix.
- Drill results Q1-Q2 2011 with JORC update Q2 2011
- Metallurgy in progress, positive initial results
- Targeting 1Moz gold to reserves
- Feasibility Q4 2011
- Production 2013





Milestones to Production

	2010				2011				2012				2013	
Option acquired	█													
Project purchased		█												
Asset consolidation study		█	█	█	█	█	█	█	█	█	█	█	█	█
Database compilation	█	█												
Confirmation drilling		█	█											
Engineering scoping			█											
Initial JORC Resource			█											
Evaluation drilling				█	█									
Updated Resource						█								
Exploration drilling							█	█						
PF and BF Studies				█	█	█	█	█						
Project Financing									█	█				
Engineering1										█	█	█		
Proposed Construction											█	█	█	
Production														█

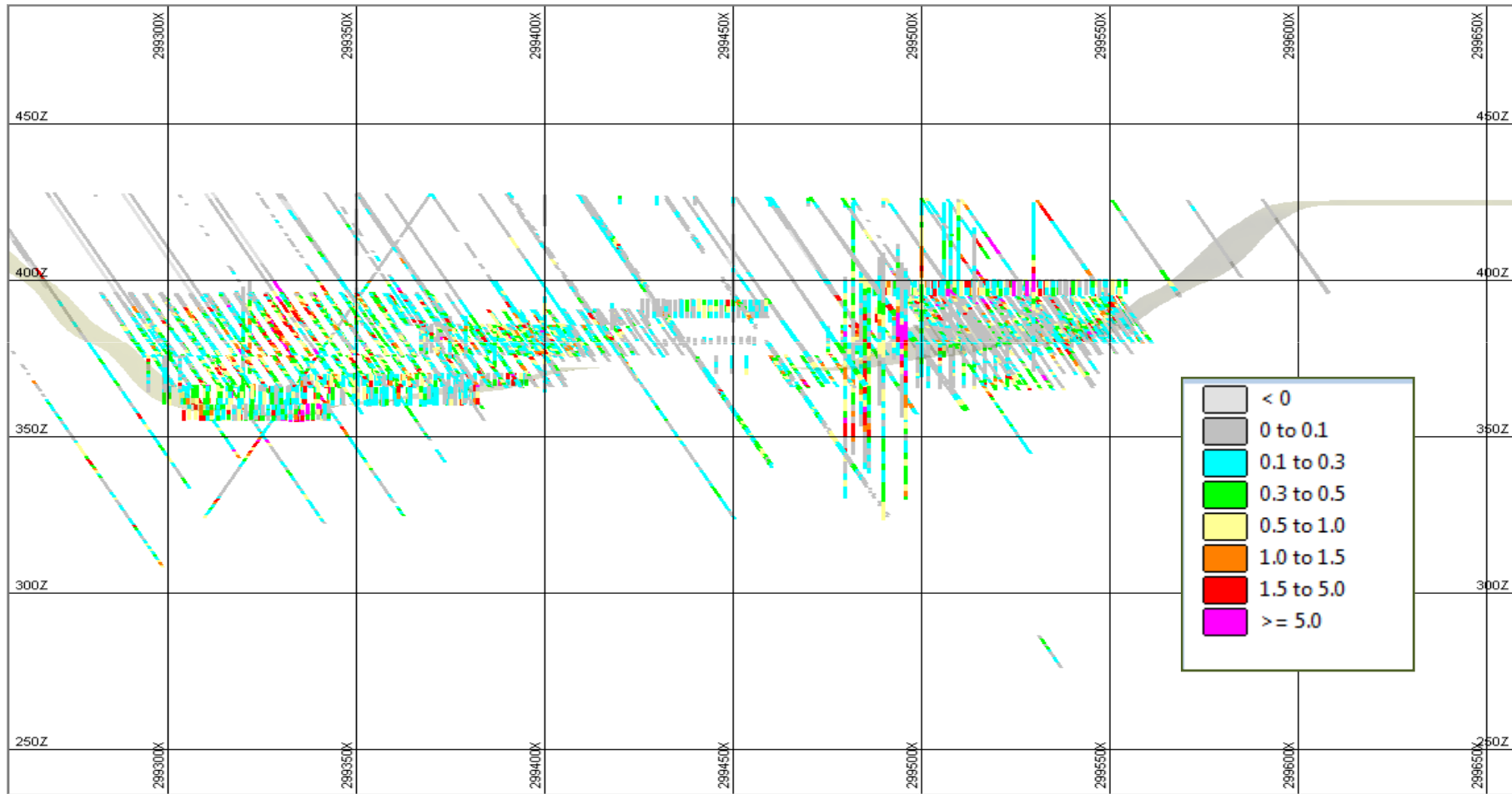


Existing Mine Infrastructure





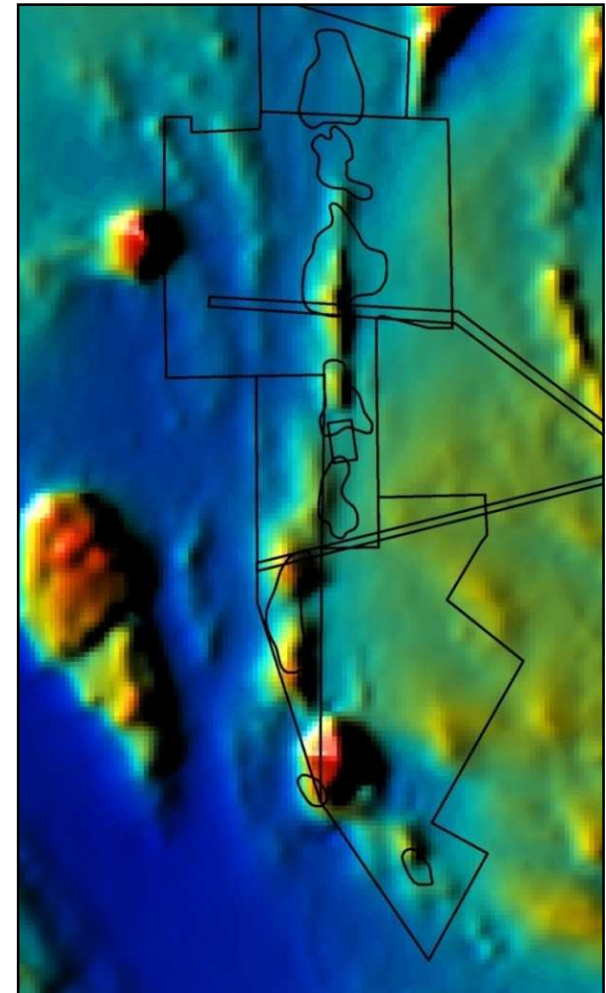
Grade Control For Initial Production





Upside Potential

- Using conservative specific gravity in current JORC
- Strike length, 12km underexplored
- Width only 500m currently tested
- Depth open beyond 120m
- Regional exploration upside
- Twin track approach to build shareholder value:
 - Accelerated mine development based on targeted 1 Moz gold reserve
 - Aggressive drilling to continuously increase resource base





Edna May Comparison

Edna May :

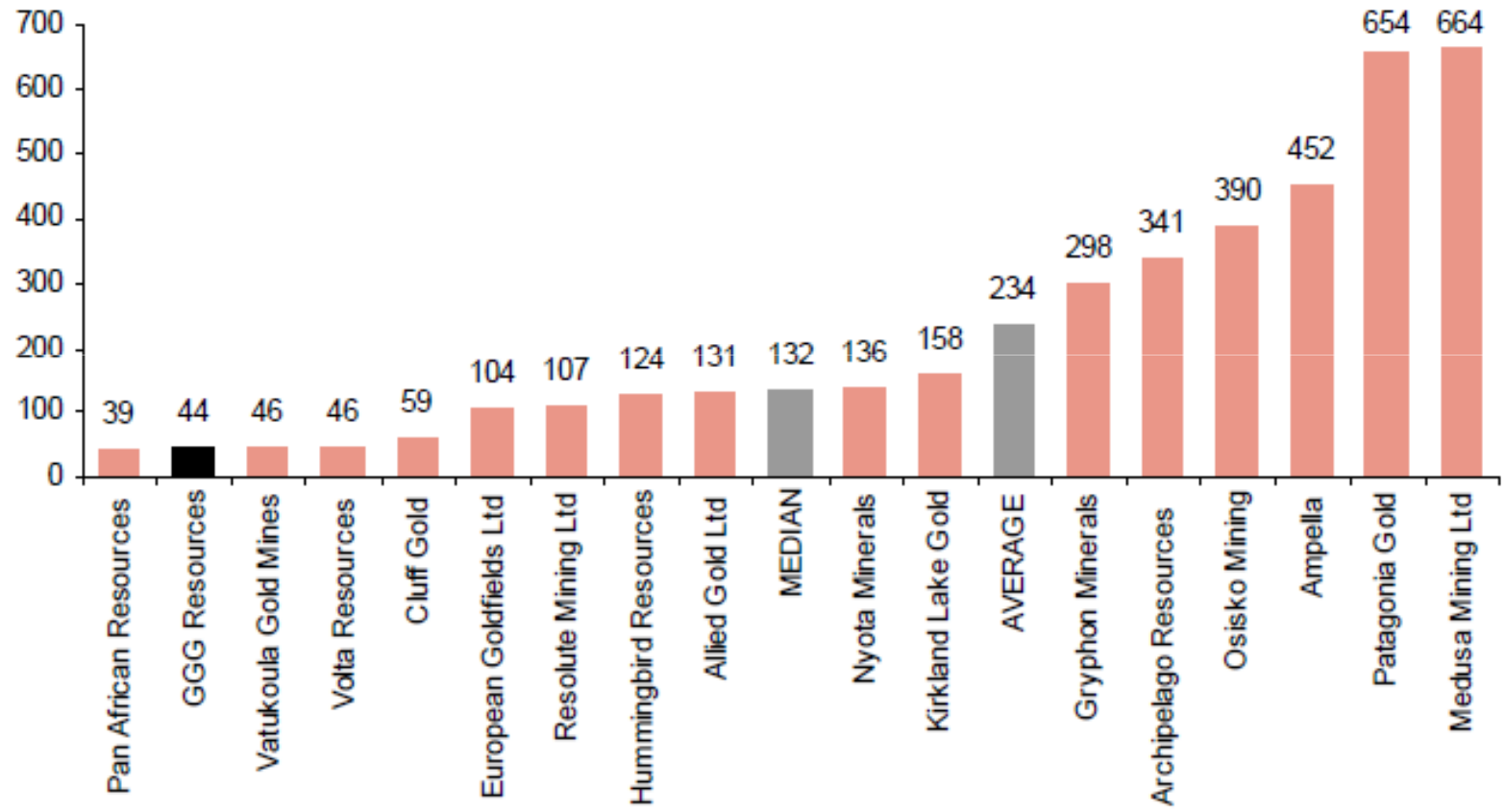
- Owned by Catalpa Resources (ASX:CAH) Market cap circa A\$330m
- About 220km west of Bullabulling, near Southern Cross
- 1.7m oz gold resource 53.1mt @ 1.0g/t, based on a 0.4g/t cut-off grade to 300m depth
- 1.0m oz gold reserve 29.4mt @ 1.1g/t , based on a 0.4g/t cut-off grade to 300m depth
- Operation costs circa A\$640 per oz
- 2:1 waste to ore ratio
- 2.8-3.2mtpa CIL plant
- Plant CAPEX A\$92m





EV/Resources Comparison

Most promising exploration play on the market



Source: Collins Stewart Research, Bloomberg, Intierra Resource Intelligence



Investment Summary

- **54% economic interest in 1.98 Moz resource**
- **Very significant potential for growth**
- **70km from Kalgoorlie in centre of the WA goldfields**
- **Fully licensed mine with water, power and infrastructure**
- **24,000m of drilling ongoing results Q1-Q2 2011**
- **JORC upgrade Q2 2011**
- **Fully funded feasibility study Q4 2011**
- **Targeting 120,000oz per annum gold production from 2013**
- **\$23m in cash to build shareholder value**
- **Management team with proven track record**



Chairman and Executive Directors

Dr Peter Ruxton

Chairman

- PhD in economic geology
- MBA from Institute of Finance
- Worked in Western Australian goldfields
- Gold Ridge Mine evaluation and feasibility
- Former fund manager CDC/Actis

Dr Jeffrey Malaihollo

Managing Director

- PhD in geological sciences
- Worked for Newcrest, Rio Tinto and Billiton in SE Asia and China
- Former head of research of London based natural resources house

Ciceron Angeles

Technical Director

- MSc mineral exploration University of New South Wales
- Certified AIMM professional geologist
- More than 30 years' international mining industry experience
- Former Asian exploration manager Newcrest during development of Gosowong

David McArthur

Finance Director

- Chartered Accountant with 30 years of public companies experience
- Former CFO and Finance Director of Dioro Exploration, Kalgoorlie-based gold producer



Non Executive Directors

Michael Short

Head of Tech. Comm.

- Chartered Engineer UK and Australia
- 35 years of worldwide project management and mine construction
- Experienced in building new mines and extension of existing ones
- Managing Director of GBM Minerals Engineering Consultants Ltd

Nigel Clark OBE

- Former Chairman British Chamber of Commerce in China
- Former Billiton General Manager China
- Ex-Chairman of China International Mining Group
- Billiton General Manager both underground and open pit in Indonesia

Paul McGroary

- Chairman Marshall Lake Mining Plc VMS copper zinc deposit in Canada