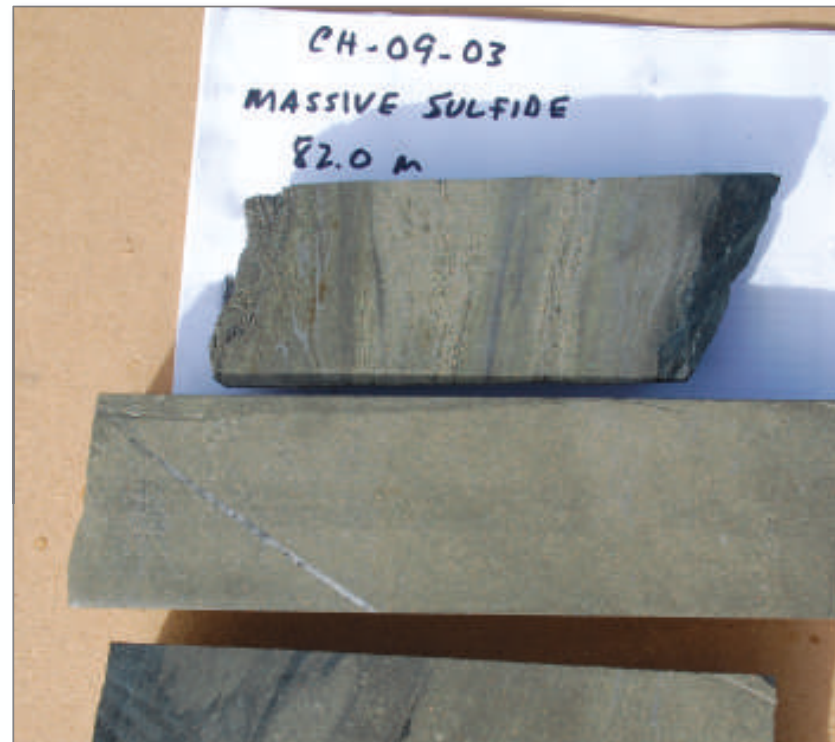


CADILLAC VENTURES



**Corporate Presentation
CDC-TSXV**

Corporate Focus



Cadillac is focused on adding shareholder value through **DEVELOPMENT FOCUSED EXPLORATION**

TWO MAIN DEVELOPMENT PROJECTS

1 – Thierry Mine – Cadillac is proving the economic viability of the proven resource at the Thierry Mine in northwestern Ontario through an ongoing drill program utilizing 2 drills with intent to re open the mine.

2 – Spain – Cadillac has completed a survey of the large license package and is moving to define and extend historically recorded mineralization on three specific properties in the package – Chaparrita, Esperanza and San Platon.





Management

Norman Brewster P.Geo – President, CEO & Director

- Over 40 years in international exploration, mine development and operation
- Experienced board member and public company executive
- Previously has successfully secured significant mine development funding through non-dilutive means such as offtakes, hedging and bank funding globally

Leo O'Shaughnessy FCA – CFO

- Over 35 years in commercial and financial experience internationally
- Experienced senior financial executive through the entire mine discovery, development, operating, permitting and financing cycle globally in public companies
- Extensive experience in international bank financing, commercial direct sales of concentrate production and hedge portfolios.



Board of Directors

- **William McCullough** – Chairman of the Board
President of Superior Logistics
- **Norman Brewster P.Geo** - Director
President & CEO of Cadillac Ventures
- **Jeremy Weir** – Director
Managing Director of Trafigura Beheer B.V.
- **Jesus Fernandez** – Director
Trafigura
- **James Burke** – Director
Trafigura
- **Maurice Stekel CA** – Director
Former Partner Birbaum, Prenick and Stekel
- **Neil Novak P.Geo** – Director
Former President Spider Resources
- **David Danziger CA** – Director
Partner MSCM LLP

Corporate Structure



Trading Symbol	CDC-TSXV
Current Price	\$0.19
Shares Outstanding	107 million
Market Capitalization	\$20.3 million
52 Week High/Low	\$0.39/\$0.13
Fully Diluted	145 million
Cash Balance	\$7.2 million
Insider Ownership	~25%

As at Dec. 30, 2010



Strategic Partner and Shareholder

Trafigura Beheer B.V.

- “Established in 1993 as a private company, Trafigura is the world’s third largest independent oil trader and the second largest independent trader in the non-ferrous concentrates market. It has access to approximately US\$24 billion in credit facilities, with investments in industrial assets around the world of more than US\$1.9 billion.”
- Trafigura “currently have in excess of US\$1 billion in assets in the various resource funds that are managed by Galena Asset Management, our wholly owned subsidiary.”
- Trafigura holds ~ 25% of Cadillac and three board seats. This industry giant is a strong and supportive shareholder who will support a production decision at either of Cadillac’s non-ferrous (Thierry, Spain) projects, and has the right, consistently exercised, to maintain their position in subsequent financings, if any.**
- Norman Brewster, founding partner and currently Director, Chairman of the Board of Iberian Minerals) previously leveraged Trafigura’s bank relationships and hedging abilities to successfully bring the Aguas Tenidas Mine held by Iberian in southwestern Spain into commercial production with non-dilutive debt and hedge financing.

Cadillac Properties



Property (by priority)	Location	Commodity	Status
Thierry Mine	Pickle Lake, Ontario	Copper, Nickel	Drilling to restate resource
Spanish Investigation Permits	Iberian Pyrite Belt, SW Spain	Copper, Zinc	Drill surveyed large land package to refine targets for follow up
Burnt Hill	Boisestown, New Brunswick	Tin, Tungsten, Moly	New discoveries and existing resource, follow up summer 2011
New Alger	Malartic, Quebec	Gold	Joint Ventured, successful drill program ongoing
Lima Norte	North of Lima, Peru	Copper	Large prospective land position recently optioned

Thierry Mine Project – Wholly owned Copper Resource



May 29/10

Based upon 2008, 2007 and historical drilling

CUT-OFF NSR C\$42/Ton	Tonnes	Cu %	Ni %	Ag g/t	Au g/t	Pt g/t	Pd g/t	NSR C\$/Tonne
Measured	2,220,670	1.90	0.21	7.7	0.13	0.13	0.41	\$77.86
Indicated	4,006,767	1.93	0.20	7.1	0.14	0.14	0.41	\$79.08
Meas. & Ind.	6,227,437	1.92	0.20	7.3	0.14	0.14	0.41	\$78.64
Inferred	8,379,392	1.79	0.16	9.6	0.18	0.12	0.35	\$72.63

Exploration Target Update

•Cadillac has increased the resource as follows, based upon partial completion of the exploration plan at depth; **Tonnes 3 to 5 million**

Cu% 1.3 to 1.5

Ni% 0.13% to 0.14

Au g/t 0.07 to 0.08

Ag g/t 8 to 10

Pt g/t 0.03 to 0.04

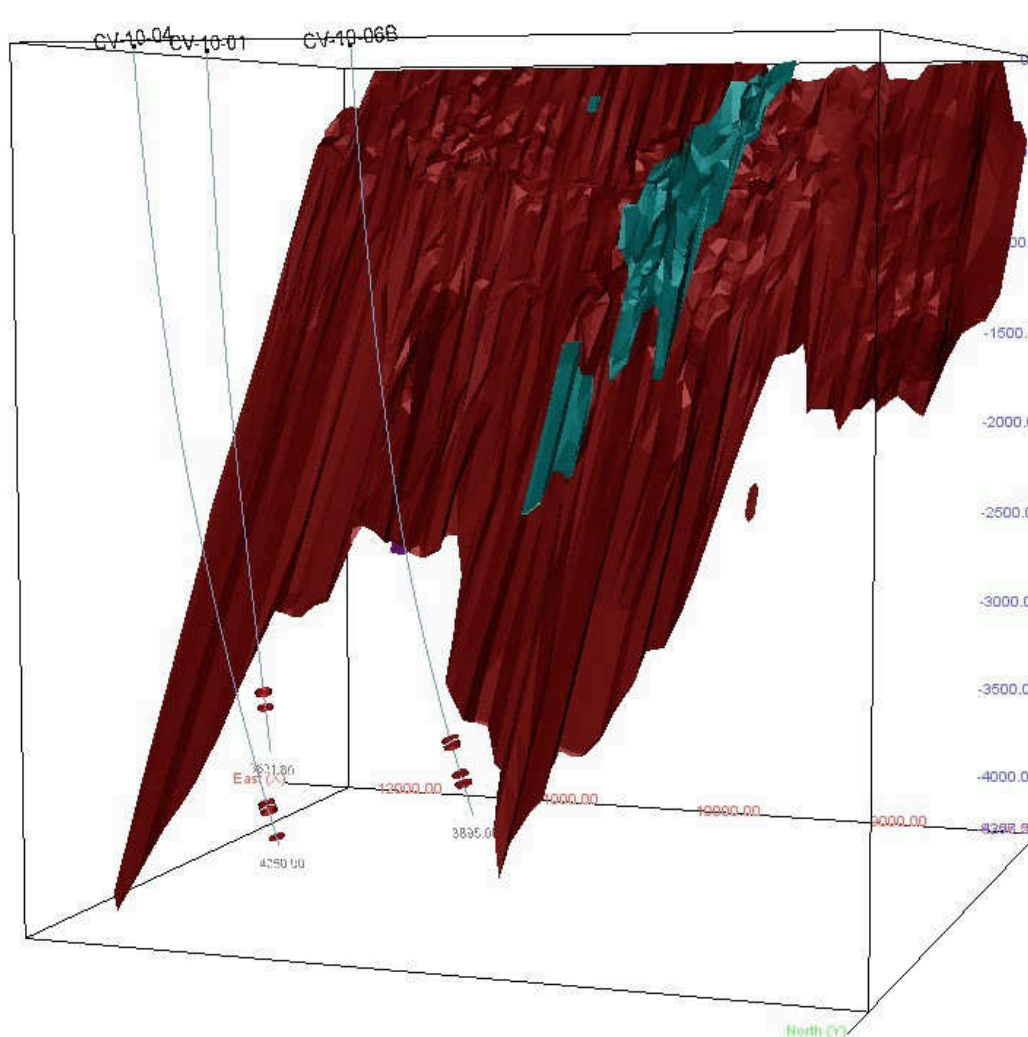
Pd 0.07 to 0.09

•This increase is based upon results obtained from initial 3 deep holes, subsequently two further holes hit mineralization, no results as yet, the 6th and final planned hole in underway.

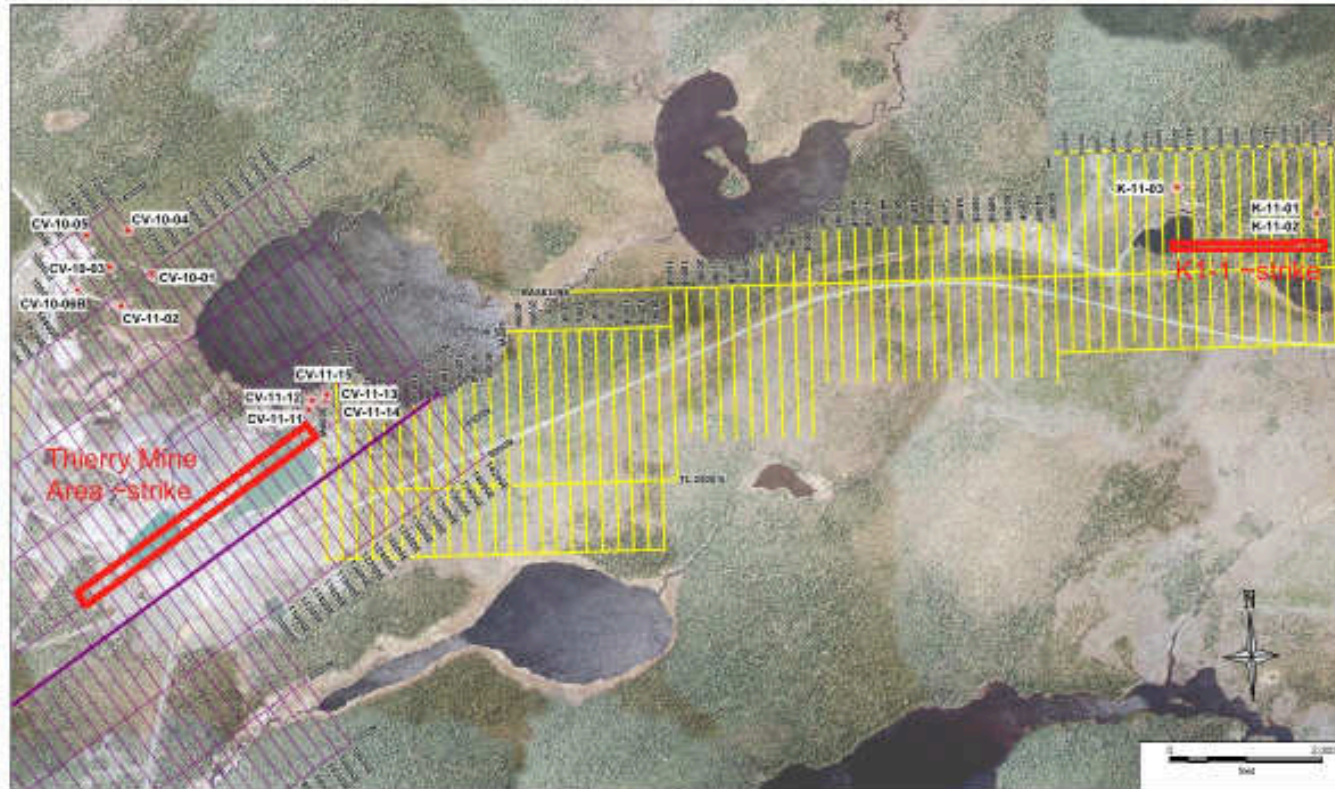


Additional Resource at Thierry

- Ongoing 6 hole deep drilling program designed to add 6 million tonnes to Thierry resource.
- Management believes that the additional tonnage, if proven, will restart operations at Thierry.
- 5 holes completed to date all successfully intersected copper.
- Intersections obtained are comparable to the existing resource model
- Drilling on the final hole is underway
- Once completed the 43-101 report will be updated.
- Preliminary dewatering operations have commenced



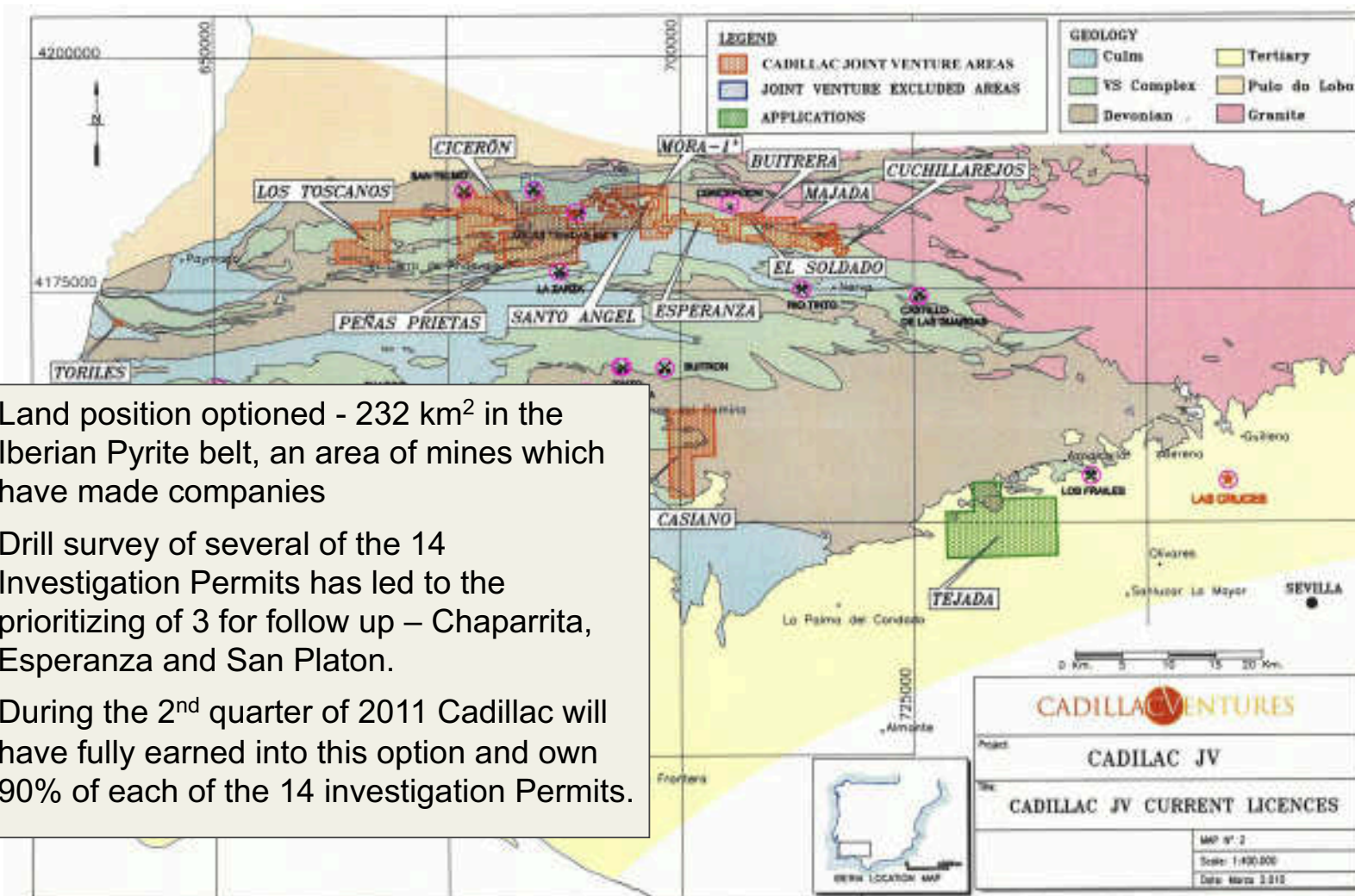
Exploration at Thierry



- The Thierry property covers ~5600 wholly owned hectares in NW Ontario.
- Exploration is ongoing 1 – at depth into the “tooth” and 2 – at the historical K1-1 showing
- Inferred surface strike of approximately 2 kms for each is depicted above

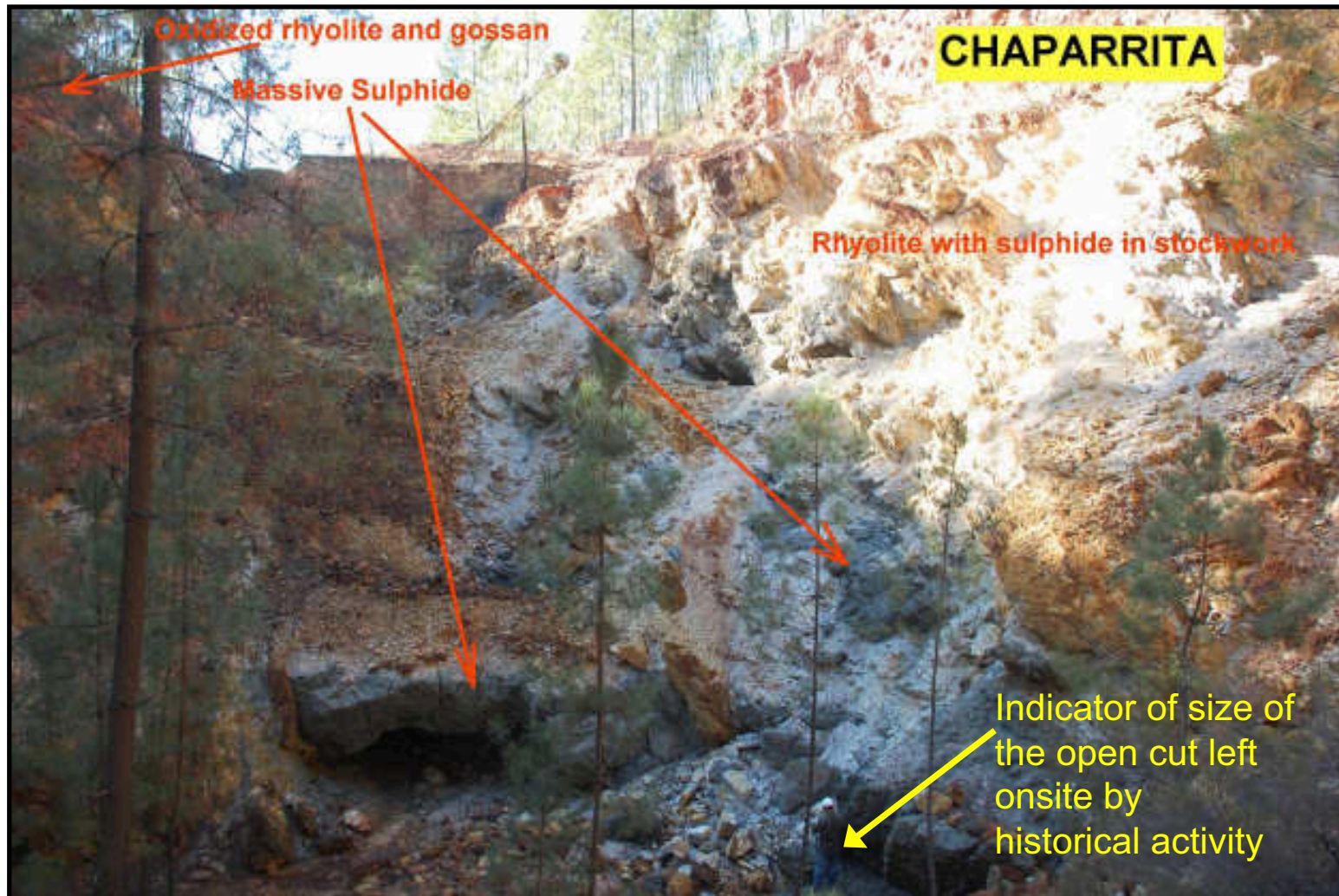


Spain – MATSA Joint Venture Agreement



- Land position optioned - 232 km² in the Iberian Pyrite belt, an area of mines which have made companies
- Drill survey of several of the 14 Investigation Permits has led to the prioritizing of 3 for follow up – Chaparrita, Esperanza and San Platon.
- During the 2nd quarter of 2011 Cadillac will have fully earned into this option and own 90% of each of the 14 investigation Permits.

Chaparrita





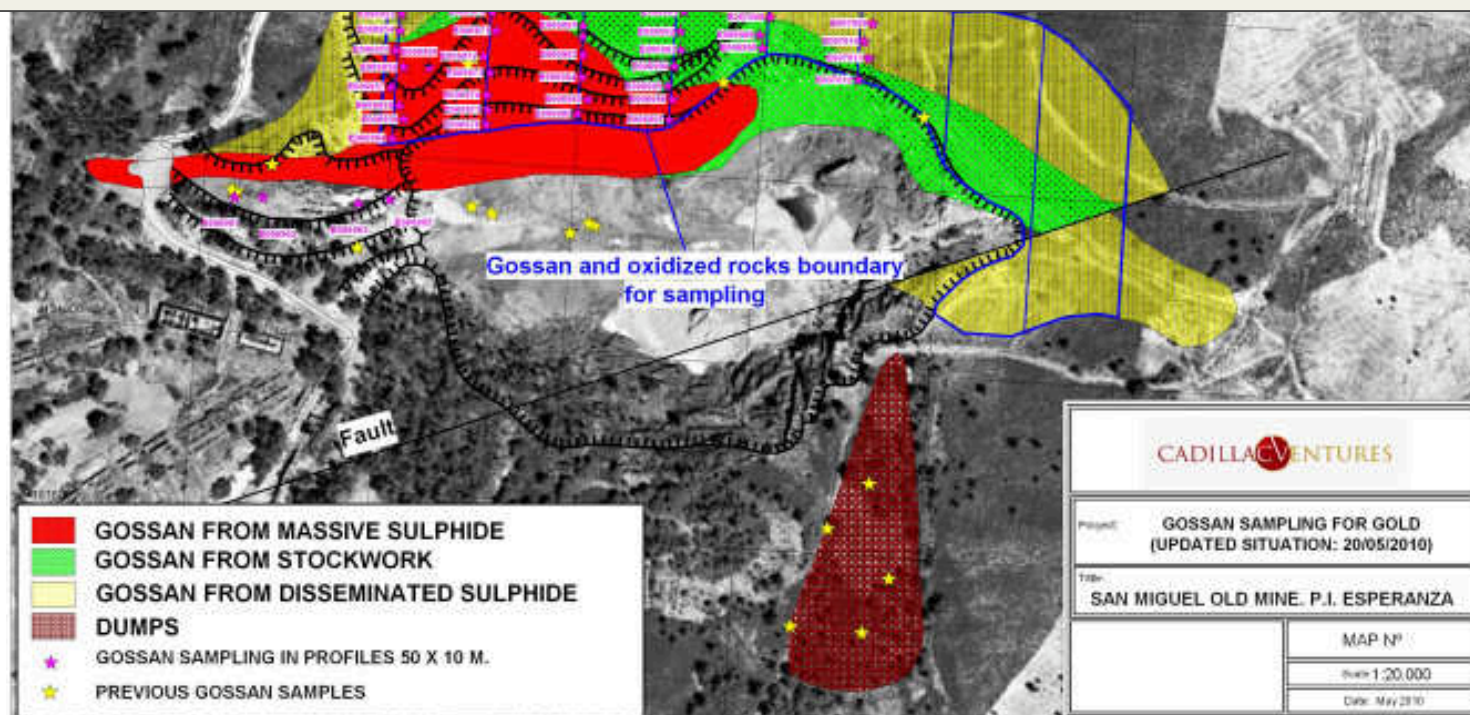
Chaparrita

- Historically mined intermittently between 1855 and 1909.
- Located ~4km ENE from the former Rio Tinto Mine, and 24 km ESE of the Aguas Tenidas Mine.
- Massive Sulphide mineralization up to several metres wide is visible in and on the pit wall.
- Historical records indicate that 70,000 tonnes of material grading between 2 and 12% Cu were mined.
- Positive results obtained by Cadillac include 18.10 metres grading 1.50% Cu and 2.57% Zn including 9.6 metres of 2.27% Cu and 3.66% Zn.
- Downhole EM surveys carried out indicate 2 off hole conductors at depth to the east.
- Chaparrita will be further drill tested to identify a compliant resource



Gold-bearing Gossan Exploration

While carrying out base metal exploration activities on the Esperanza investigation Permit it became evident there is a sizeable gold gossan formation on the surface of this property, in the vicinity of the open pits and cuts left from historic mining activity. Cadillac has carried out an RC drilling program on this gossan to determine an average gold grade. If the grade is sufficient this surface occurrence of gold in deteriorated rock is a comparatively simple and cost effective material to mine.



www.cadillacventures.com
CDC-TSXV

New Alger Project – Gold – Cadillac Break, Val D'Or Quebec



- Wholly owned and well positioned in the prolific Cadillac Break.
- Optioned to Renforth Resources who has had a successful drill program.
- Gold is not the mandate of Cadillac Ventures, so the property was optioned in order to add value without cash outlay.
- As Renforth advances the project Cadillac benefits through a retained ownership position.



www.cadillacventures.com
CDC-TSXV



Burnt Hill Project – Tungsten, Moly and Tin –New Brunswick

- 51% owned JV with Noront Resources Ltd.
- Previously reached pre-feasibility stage, with a pilot plant in operation on the property, in the early 1980's, shut down due to drop in tungsten price.

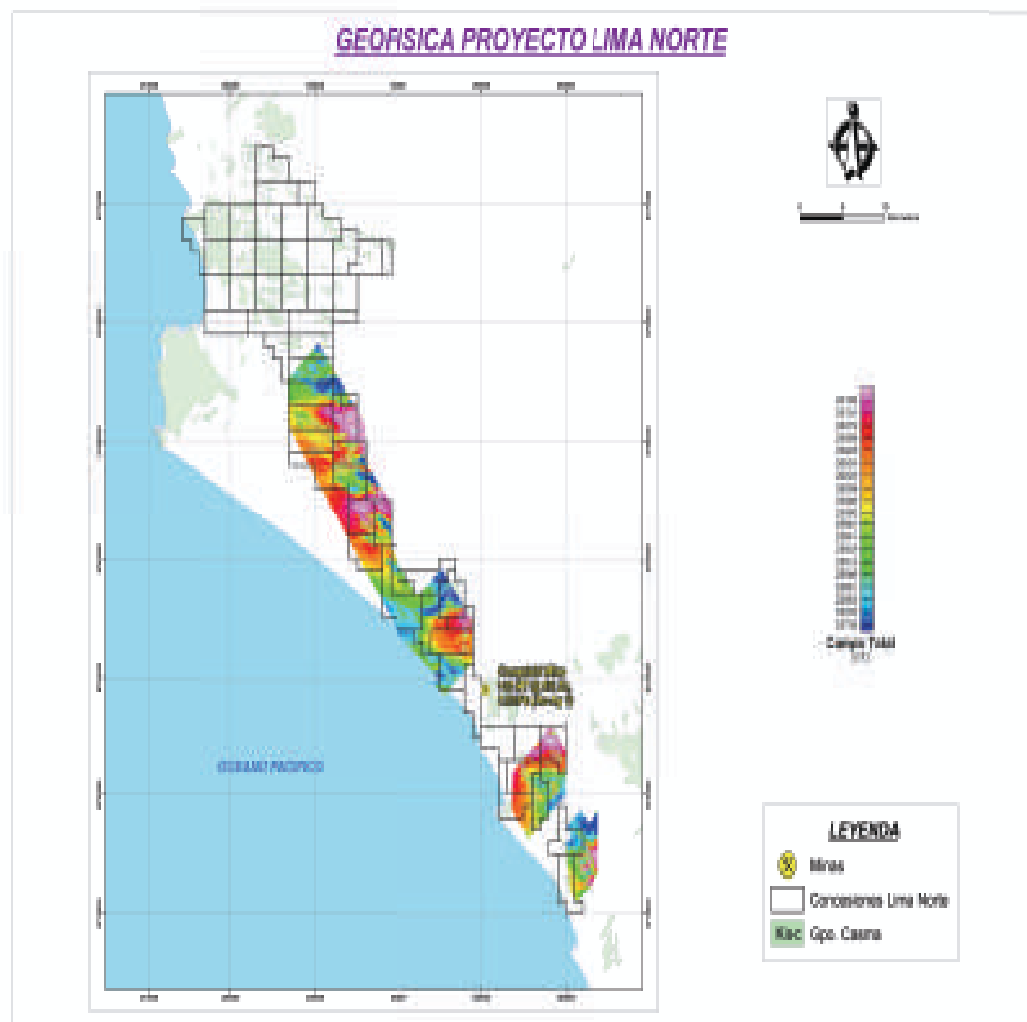


- 2010 field prospecting and mapping tested the previously unexplored but known occurrences on the property, outside of the former mine area historically focused on.
- This program was successful in identifying large occurrences of mineralization and structures which may relate to the mine area.
- Follow up mapping, trenching and drilling is planned in 2011.



Lima Norte Project

- The Lima Norte project is located in Peru, north of Lima
- Cadillac has the option to acquire this property through a cash payment and work commitment
- The claims are located in an area of numerous mines





Forward Looking Statement

This presentation contains certain “forward-looking statements” and “forward-looking information” under applicable securities laws. Except for statements of historical fact, certain information contained herein constitutes forward-looking statements. Forward-looking statements are frequently characterized by words such as “plan”, “expect”, “project”, “intend”, “believe”, “anticipate”, “estimate”, and other similar words, or statements that certain events or conditions “may” or “will” occur. Forward looking information may include, but is not limited to, statements with respect to the future financial or operating performances of the Corporation, estimated of future capital, operating and exploration expenditures, the future price of copper, gold and zinc, the estimation of mineral reserves and resources, specifically the updating of the mineral resource at Thierry,, the realization of mineral reserve estimates, the costs and timing of future exploration, requirements for additional capital, government regulation of exploration, development and mining operations, environmental risks, reclamation and rehabilitation expenses, title disputes or claims, and limitations of insurance coverage. Forward-looking statements are based on the opinions and estimates of management at the date the statements are made, and are based on a number of assumptions and subject to a variety of risks and uncertainties and other factors that could cause actual events or results to differ materially from those projected in the forward-looking statements. Many of these assumptions are based on factors and events that are not within the control of the Corporation and there is no assurance they will prove to be correct. Factors that could cause actual results to vary materially from results anticipated by such forward-looking statements include changes in market conditions and other risk factors discussed or referred to in the section entitled “Risk Factors” in the Corporation’s most recently filed MD&A has attempted to identify important factors that could cause actual actions, events or results to differ materially from those described in forward-looking statements, there may be other factors that cause actions, events or results not to be anticipated, estimated or intended. There can be no assurance that forward-looking statements will prove to be accurate, as actual results and future events could differ materially from those anticipated in such statements. The Corporation undertakes no obligation to update forward-looking statements if circumstances or management’s estimates or opinions should change except as required by applicable securities laws. The reader is cautioned not to place undue reliance on forward-looking statements.

Unless otherwise stated, the information contained in this presentation is as of April 30, 2010.

CDC - TSXV

Investor Relations Contact

Investor Cubed
(647) 258-3311

Or

Cadillac Ventures Inc.
Norman Brewster
416-203-7722

www.cadillacventures.com

